

DUBAI OFFICE
Office # 505, Block # 3,
Bin Shabib Mall,
Al Qusais, Dubai, U.A.E
Contact # +971 4 882 1839

SAUDI OFFICE
PO Box, 7184,
Al-Dammam-32415
Kingdom of Saudi Arabia
Contact # +966 13 809 2200

Contact Now:
+971 56 727 4205
+971 52 516 2797
sales@promaxdx.com
www.promaxdx.com

SOME OF OUR VALUED CLIENTS



PROFESSIONAL SERVICES THAT COMES UNDER THE UMBRELLA OF PROMAX CONTRACTING



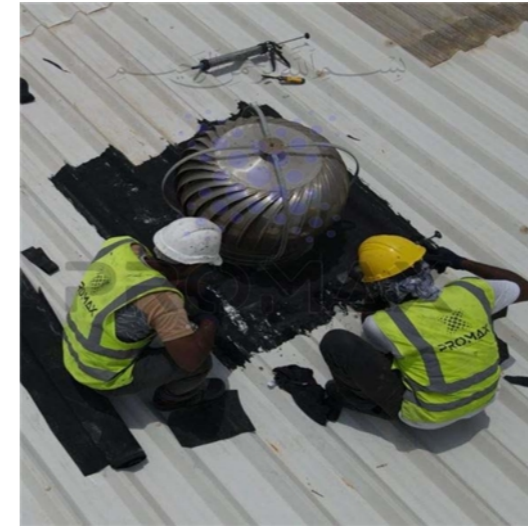
EPOXY FLOORING
Pg. 3 to 10



ROOF WATERPROOFING
Pg. 11 to 23



SMOKE VENTS REPAIR & MAINTENANCE
Pg. 23



WIND VENTILATORS
Pg. 24 to 28



CHIMNEY / DUCTING WORKS
Pg. 29



SINGLE / DOUBLE SKIN SKYLIGHTS INSTALLATION
Pg. 30 to 32



INDUSTRIAL GRADE EXTERNAL / INTERNAL PAINT WORKS
Pg. 33 to 36



FENCE REPAIR / RUST TREATMENT / PAINT WORKS
Pg. 37 to 44



SAFETY LIFE LINE
Pg. 45 to Pg. 47



INTERLOCK SYSTEM
Pg. 48 to 52



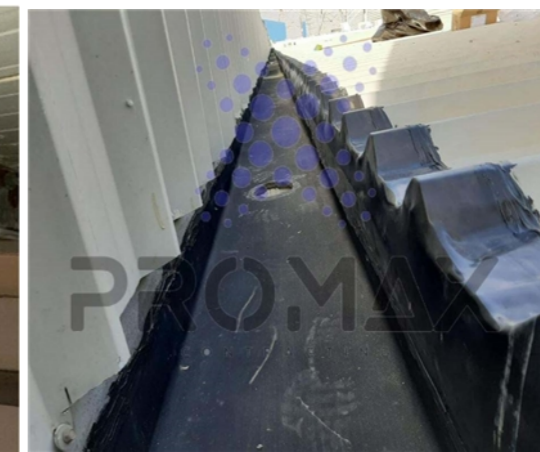
FABRICATION, SUPPLY & INSTALLATION OF SPIRAL LADDERS
Pg. 53



FABRICATION, SUPPLY & INSTALLATION OF CAT LADDERS
Pg. 54 to 57



PURLIN RUST TREATMENT / REPLACEMENT OF DAMAGED PURLINS
Pg. 58 & 59



EAVE / VALLEY GUTTER TREATMENT USING PROMAX EPDM SOLUTIONS
Pg. 60 to 63



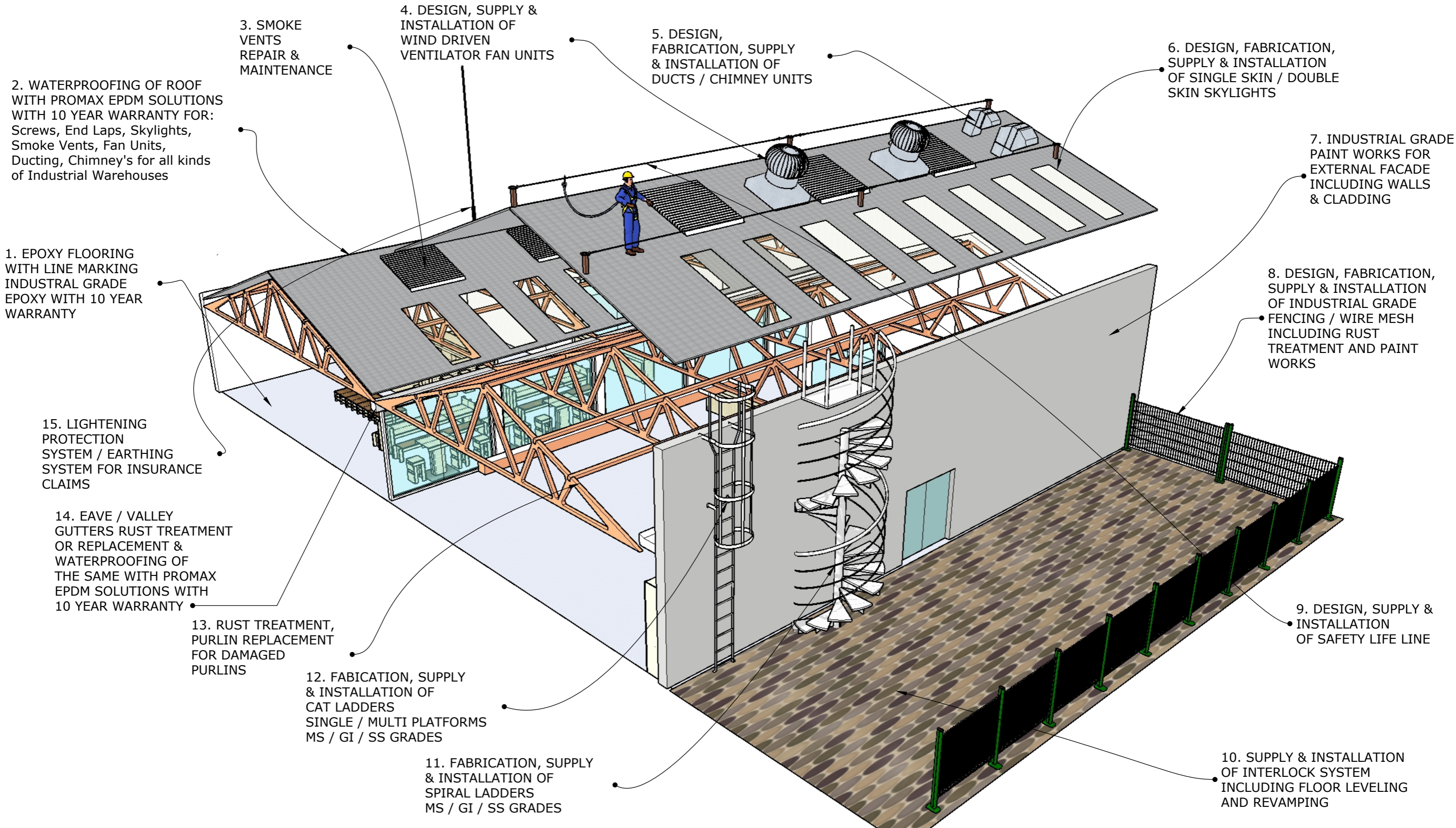
LIGHTNING PROTECTION SYSTEM FOR WAREHOUSES
Pg. 64 & 65

DUBAI OFFICE
Office # 505, Block # 3,
Bin Shabib Mall,
Al Qusais, Dubai, U.A.E
Contact # +971 4 882 1839

SAUDI OFFICE
PO Box, 7184,
Al-Dammam-32415
Kingdom of Saudi Arabia
Contact # +966 13 809 2200

Contact Now:
+971 56 727 4205
+971 52 516 2797
sales@promaxdx.com
www.promaxdx.com

SOME OF OUR VALUED CLIENTS



DUBAI OFFICE

Office # 505, Block # 3,
Bin Shabib Mall,
Al Qusais, Dubai, U.A.E
Contact # +971 4 882 1839

SAUDI OFFICE

PO Box, 7184,
Al-Dammam-32415
Kingdom of Saudi Arabia
Contact # +966 13 809 2200

Contact Now:

+971 56 727 4205
+971 52 516 2797
sales@promaxdx.com
www.promaxdx.com

SOME OF OUR VALUED CLIENTS



**EPOXY FLOORING
WITH LINE MARKING
INDUSTRIAL GRADE
EPOXY WITH 10 YEAR
WARRANTY**



DUBAI OFFICE

Office # 505, Block # 3,
Bin Shabib Mall,
Al Qusais, Dubai, U.A.E
Contact # +971 4 882 1839

SAUDI OFFICE

PO Box, 7184,
Al-Dammam-32415
Kingdom of Saudi Arabia
Contact # +966 13 809 2200

Contact Now:

+971 56 727 4205
+971 52 516 2797
sales@promaxdx.com
www.promaxdx.com

SOME OF OUR VALUED CLIENTS



**FLOOR GRIDNING
USING INDUSTRIAL
GRINDERS
TO MAKE THE SURFACE
SMOOTH FOR
PRIMER COATING**

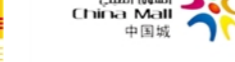


DUBAI OFFICE
Office # 505, Block # 3,
Bin Shabib Mall,
Al Qusais, Dubai, U.A.E
Contact # +971 4 882 1839

SAUDI OFFICE
PO Box, 7184,
Al-Dammam-32415
Kingdom of Saudi Arabia
Contact # +966 13 809 2200

Contact Now:
+971 56 727 4205
+971 52 516 2797
sales@promaxdx.com
www.promaxdx.com

SOME OF OUR VALUED CLIENTS



**APPLICATION OF
PRIMER
USA MADE BEFORE
PROCEEDING
FOR APPLICATION
OF 2 X COATS
OF INDUSTRIAL
GRADE EPOXY
FLOORING**



DUBAI OFFICE

Office # 505, Block # 3,
Bin Shabib Mall,
Al Qusais, Dubai, U.A.E
Contact # +971 4 882 1839

SAUDI OFFICE

PO Box, 7184,
Al-Dammam-32415
Kingdom of Saudi Arabia
Contact # +966 13 809 2200

Contact Now:

+971 56 727 4205
+971 52 516 2797
sales@promaxdx.com
www.promaxdx.com

SOME OF OUR VALUED CLIENTS



**APPLICATION
OF 2 X COATS
OF USA MADE
INDUSTRIAL
GRADE EPOXY
FLOORING**



DUBAI OFFICE
Office # 505, Block # 3,
Bin Shabib Mall,
Al Qusais, Dubai, U.A.E
Contact # +971 4 882 1839

SAUDI OFFICE
PO Box, 7184,
Al-Dammam-32415
Kingdom of Saudi Arabia
Contact # +966 13 809 2200

Contact Now:
+971 56 727 4205
+971 52 516 2797
sales@promaxdx.com
www.promaxdx.com

SOME OF OUR VALUED CLIENTS



LINE MARKING AS PER CLIENT DESIGN AND REQUIREMENT



DUBAI OFFICE
Office # 505, Block # 3,
Bin Shabib Mall,
Al Qusais, Dubai, U.A.E
Contact # +971 4 882 1839

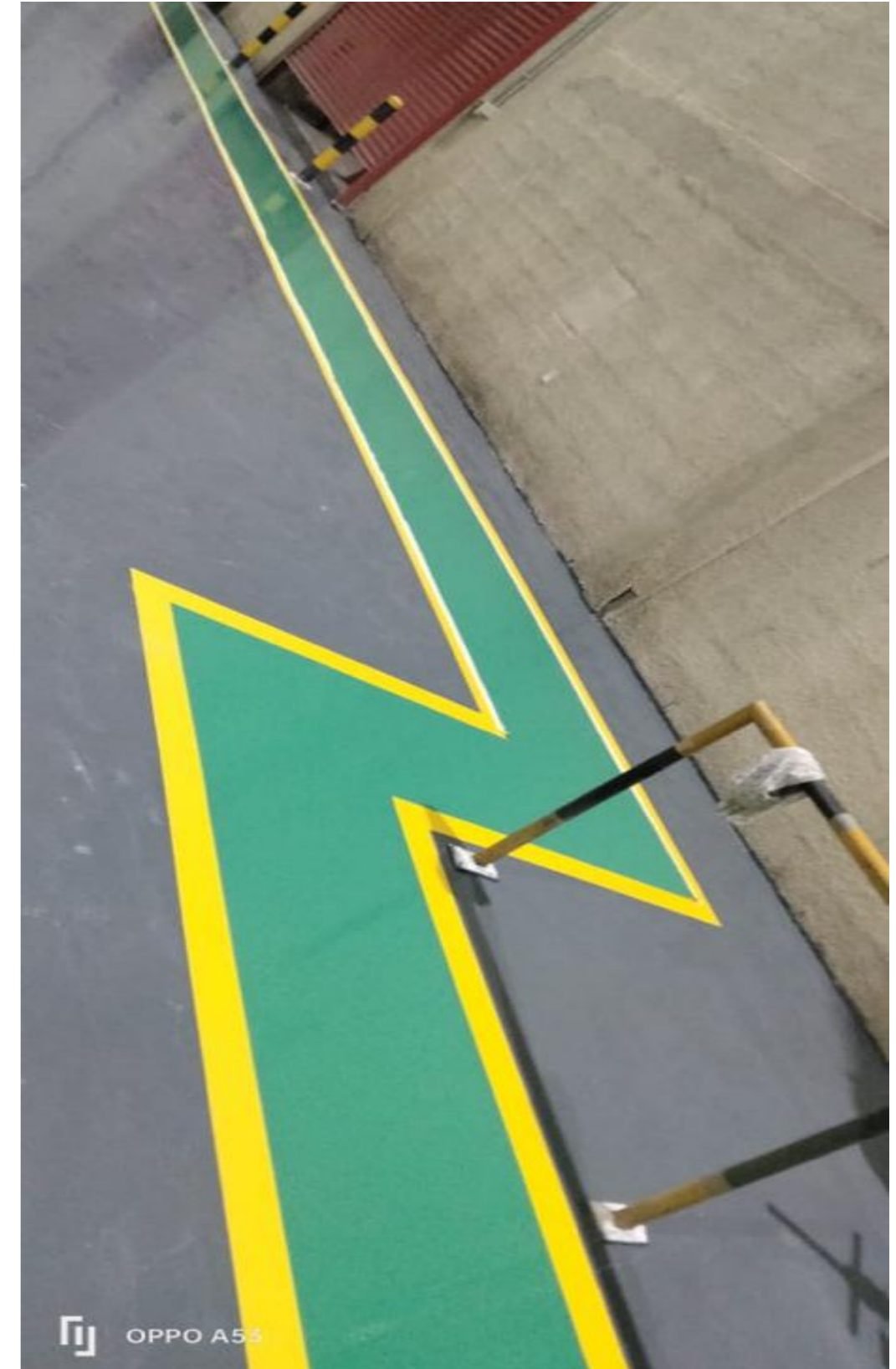
SAUDI OFFICE
PO Box, 7184,
Al-Dammam-32415
Kingdom of Saudi Arabia
Contact # +966 13 809 2200

Contact Now:
+971 56 727 4205
+971 52 516 2797
sales@promaxdx.com
www.promaxdx.com

SOME OF OUR VALUED CLIENTS



**LINE COLORING
AND PATHWAY
CREATION AS
PER CLIENT
DESIGN AND
REQUIREMENT**



DUBAI OFFICE
Office # 505, Block # 3,
Bin Shabib Mall,
Al Qusais, Dubai, U.A.E
Contact # +971 4 882 1839

SAUDI OFFICE
PO Box, 7184,
Al-Dammam-32415
Kingdom of Saudi Arabia
Contact # +966 13 809 2200

Contact Now:
+971 56 727 4205
+971 52 516 2797
sales@promaxdx.com
www.promaxdx.com

SOME OF OUR VALUED CLIENTS

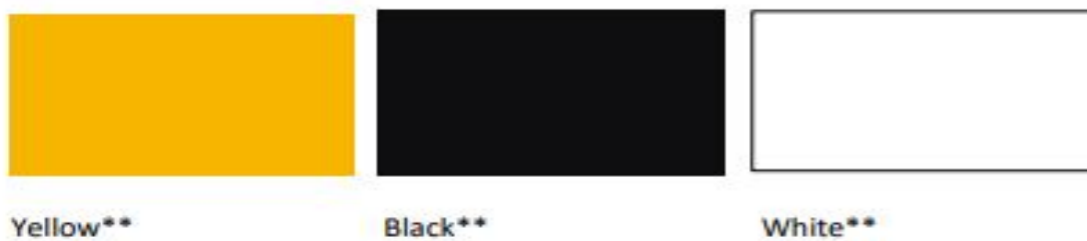


COLOUR CHART

DECKSHIELD / INDUSTRIAL RANGE



DECKSHIELD LINEMARKER



- ❖ Please note that due to several factors, including your computer or mobile screen's brightness, contrast and colour depth, the colours shown on screen may differ from those physically applied.
- ❖ This document when printed, will produce different results in colors from different printers.

*Please refer to a physical RAL Classic Color Card for final selection of required color or request for a true colour sample.

**Contact our customer service for a true colour sample.

A solvent free, high performance epoxy coating which is suitable for factories, warehouses, plants and warehouses.

Can be used as a hard wearing, coloured floor coating for industrial facilities.

- Good Chemical Resistance:** Protects against a range of chemicals used in manufacturing processes.
- Solvent Free:** Solvent free, low in VOCs and environmentally friendly.
- Hygienic & Easy to Clean:** The seamless and gloss finish allows the system to be cleaned easily.
- Hard-Wearing:** Hard-wearing & abrasion resistant suitable for medium to heavy traffic.



The color chart is for illustrative purposes only. For a full colour chart and samples, contact your local Flowcrete office.

Technical Profile*

FIRE RESISTANCE			
EN 13501-1	B ₁ - s1		
SLIP RESISTANCE**			
Method described in BS 7976-2 (typical values for 4-S rubber slider)		Dry >40, Wet depends on specification (in accordance with HSE and UKSRG guidelines)	
THERMAL RESISTANCE			
Tolerant up to 60°C			
WATER PERMEABILITY			
Nil - Karsten test (impermeable)			
CHEMICAL RESISTANCE			
Contact technical department			
SURFACE HARDNESS			
Koenig Hardness Test	180 secs.		
ABRASION RESISTANCE			
Taber Abrader (1 kg load using CS10 wheels)	80 mg loss per 1000 cycles		
COMPRESSIVE STRENGTH			
BS 6319	>60 N/mm ²		
FLEXURAL STRENGTH			
BS 6319	>40 N/mm ²		
TENSILE STRENGTH			
BS 6319	>15 N/mm ²		
BOND STRENGTH			
Greater than cohesive strength of 25 N/mm ² concrete. >1.5 MPa			
SPEED OF CURE	10°C	20°C	30°C
Light Traffic	48 h	16 h	12 h
Full Traffic	72 h	48 h	40 h
Full Chemical Cure	12 d	7 d	6 d

* These figures are typical properties achieved in laboratory tests at 20°C and at 50% Relative Humidity.

**The slipperiness of flooring materials can change significantly, due to the installation process, after short periods of use, due to inappropriate maintenance, longer-term wear and/or surface contaminants (wet or dry). Textured systems are recommended to meet slip resistance value requirements for wet conditions and/or surface contaminants (wet or dry) - please contact our Technical Advisors for further details and specifications.

DUBAI OFFICE
Office # 505, Block # 3,
Bin Shabib Mall,
Al Qusais, Dubai, U.A.E
Contact # +971 4 882 1839

SAUDI OFFICE
PO Box, 7184,
Al-Dammam-32415
Kingdom of Saudi Arabia
Contact # +966 13 809 2200

Contact Now:
+971 56 727 4205
+971 52 516 2797
sales@promaxdx.com
www.promaxdx.com

SOME OF OUR VALUED CLIENTS



Products Included In This System

Primer	Primer (if required)
Coating	Flowcoat SF41
Finishing Coat	Flowcoat SF41 Composite (incorporated into build up systems of 3mm and above)

For actual coverage rates, refer to the appropriate project specification.

Detailed application instructions are available upon request.

Substrate Requirements

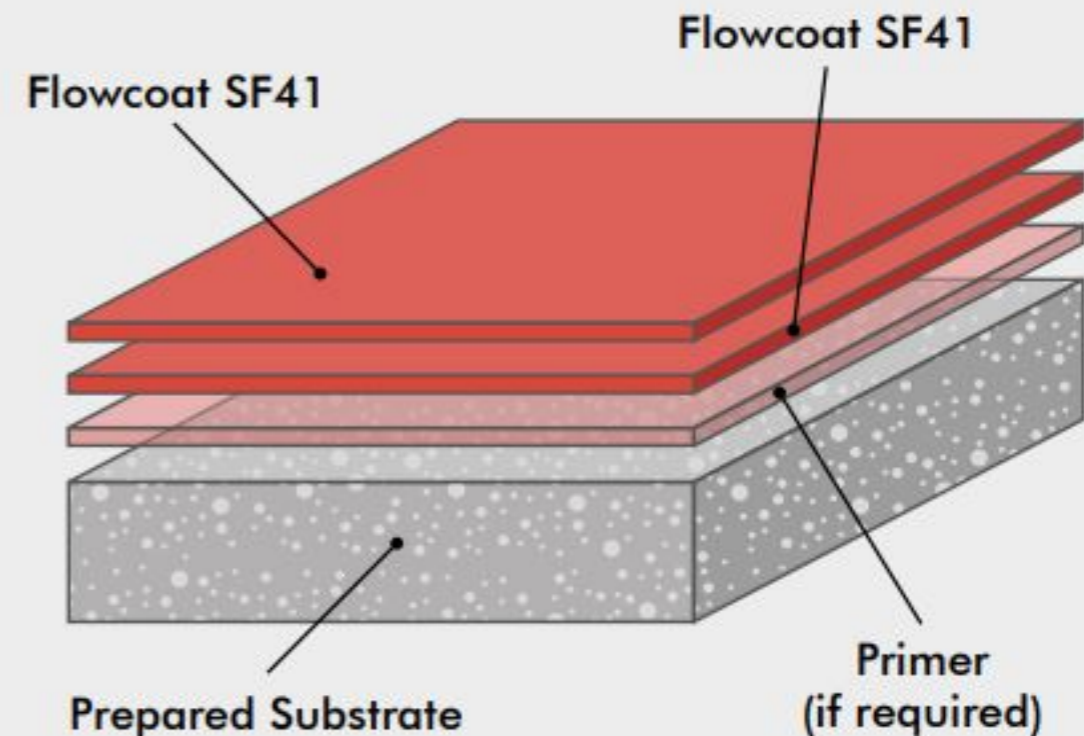
Concrete or screed substrate should be a minimum of 25N/mm², free from laitance, dust and other contamination. The substrate should be dry up to 75% RH as per BS8204 and free from rising damp and ground water pressure.

Model Specification

System	Flowcoat SF41
Finish	Gloss
Thickness	Dependent on specification
Manufacturer	StonCor Middle East LLC

Preparatory work and application in accordance with manufacturer's instructions.

System Design

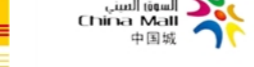


DUBAI OFFICE
Office # 505, Block # 3,
Bin Shabib Mall,
Al Qusais, Dubai, U.A.E
Contact # +971 4 882 1839

SAUDI OFFICE
PO Box, 7184,
Al-Dammam-32415
Kingdom of Saudi Arabia
Contact # +966 13 809 2200

Contact Now:
+971 56 727 4205
+971 52 516 2797
sales@promaxdx.com
www.promaxdx.com

SOME OF OUR VALUED CLIENTS



WATERPROOFING OF METAL ROOF

**TREATMENT OF:
Screws, End Laps,
Skylights, Chimney's,
Ducts, Fan Units, Smoke
Vents, Eave & Valley
Gutters, Rusted Joints
using EPDM Solutions**

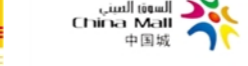


DUBAI OFFICE
Office # 505, Block # 3,
Bin Shabib Mall,
Al Qusais, Dubai, U.A.E
Contact # +971 4 882 1839

SAUDI OFFICE
PO Box, 7184,
Al-Dammam-32415
Kingdom of Saudi Arabia
Contact # +966 13 809 2200

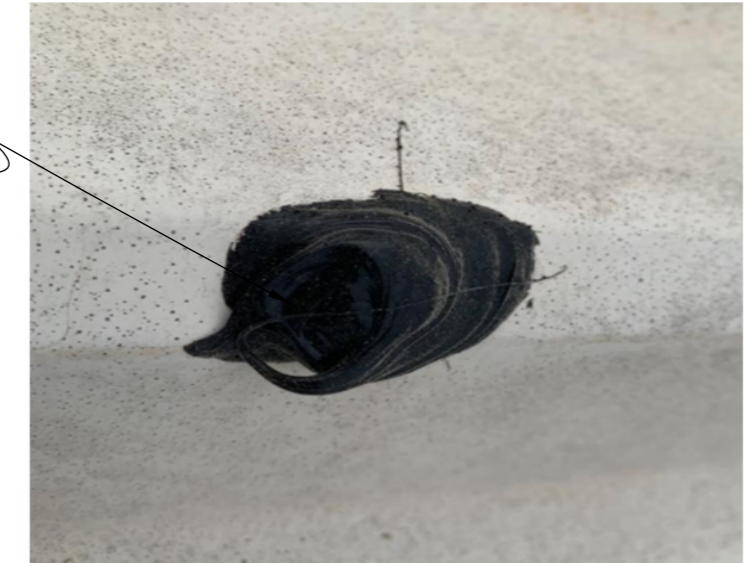
Contact Now:
+971 56 727 4205
+971 52 516 2797
sales@promaxdx.com
www.promaxdx.com

SOME OF OUR VALUED CLIENTS



Screw Heads / Loose Screws / Missing Screws / Backed Out Screws / Rusted Screws

There are many places where the screws are backed out and are missing Including rivets as well. These needs to be replaced with the new ones and sealed with our PROMAX Bonding Adhesive required to close the openings. Entire roof to be cleaned thoroughly, removal of existing coatings, replacement of damaged / torn out screws and rivets and then sealed properly on the entire roof.



MISSING SCREW

RUSTED SCREW

BACKED OUT SCREW

BROKEN WASHER SCREW

BACKED OUT SCREW

BACKED OUT SCREW

SCREW CAUSING SHEET PUNCTURE

DUBAI OFFICE

Office # 505, Block # 3,
Bin Shabib Mall,
Al Qusais, Dubai, U.A.E
Contact # +971 4 882 1839

SAUDI OFFICE

PO Box, 7184,
Al-Dammam-32415
Kingdom of Saudi Arabia
Contact # +966 13 809 2200

Contact Now:

+971 56 727 4205
+971 52 516 2797
sales@promaxdx.com
www.promaxdx.com

SOME OF OUR VALUED CLIENTS

Rusted End Laps / Non-Rusted End Laps Horizontal Joints

90% Leakage Cause Point in a metal building

Most of the leakage happens from the horizontal joints due to contraction / expansion. There are many other companies in the market for waterproofing but none of them are expert in metal roofing.

Promax Contracting management holds certifications from Firestone UK as well as trained staff who are well versed in metal roofing and its problems.

There are many different solutions which different companies apply to resolve this matter but all remain in vain.

- 1. The most common is the Liquid Rubber Paint which is applied on a cloth mesh which fails drastically.**
- 2. Then companies also apply Bitumen on the joints, since it is torch applied, it becomes hard and fails badly as well.**
- 3. Some roofs we have found where Fiber Glass was applied over the joints which also failed badly due to its stiffness and rigidity.**
- 4. Lastly, people spray PU Foams on top of the entire roof which is a disaster for the owner, because PU is a good material for insulation, but is the worst when it comes to waterproofing, since it soaks in the water like a sponge and then creates air bubbles which also contains moisture and ultimately resulting in rusting for the roofs. In this case, the cost of removal is almost as equal to the solution that we have to apply to waterproof the roof.**

DUBAI OFFICE
Office # 505, Block # 3,
Bin Shabib Mall,
Al Qusais, Dubai, U.A.E
Contact # +971 4 882 1839

SAUDI OFFICE
PO Box, 7184,
Al-Dammam-32415
Kingdom of Saudi Arabia
Contact # +966 13 809 2200

Contact Now:
+971 56 727 4205
+971 52 516 2797
sales@promaxdx.com
www.promaxdx.com

SOME OF OUR VALUED CLIENTS



LIQUID RUBBER PAINT BASED PROBLEM

THE WATER START TO ACCUMULATE IN THE CLOTH MESH AND THEN STARTS TO LEAK

DUE TO CONTRACTION AND EXPANSION THE MESH IS TORN APART AND LIQUID PAINT COMES OUT

IN DOUBLE COATING SYSTEM THE WATER FROM CONDENSATION ACCUMULATES WITHIN THE END LAP AND ULTIMATELY LEADS TO RUSTING ABOVE AND CAUSE DAMAGE TO THE BELOW PURLIN



DUBAI OFFICE
Office # 505, Block # 3,
Bin Shabib Mall,
Al Qusais, Dubai, U.A.E
Contact # +971 4 882 1839

SAUDI OFFICE
PO Box, 7184,
Al-Dammam-32415
Kingdom of Saudi Arabia
Contact # +966 13 809 2200

Contact Now:
+971 56 727 4205
+971 52 516 2797
sales@promaxdx.com
www.promaxdx.com

SOME OF OUR VALUED CLIENTS

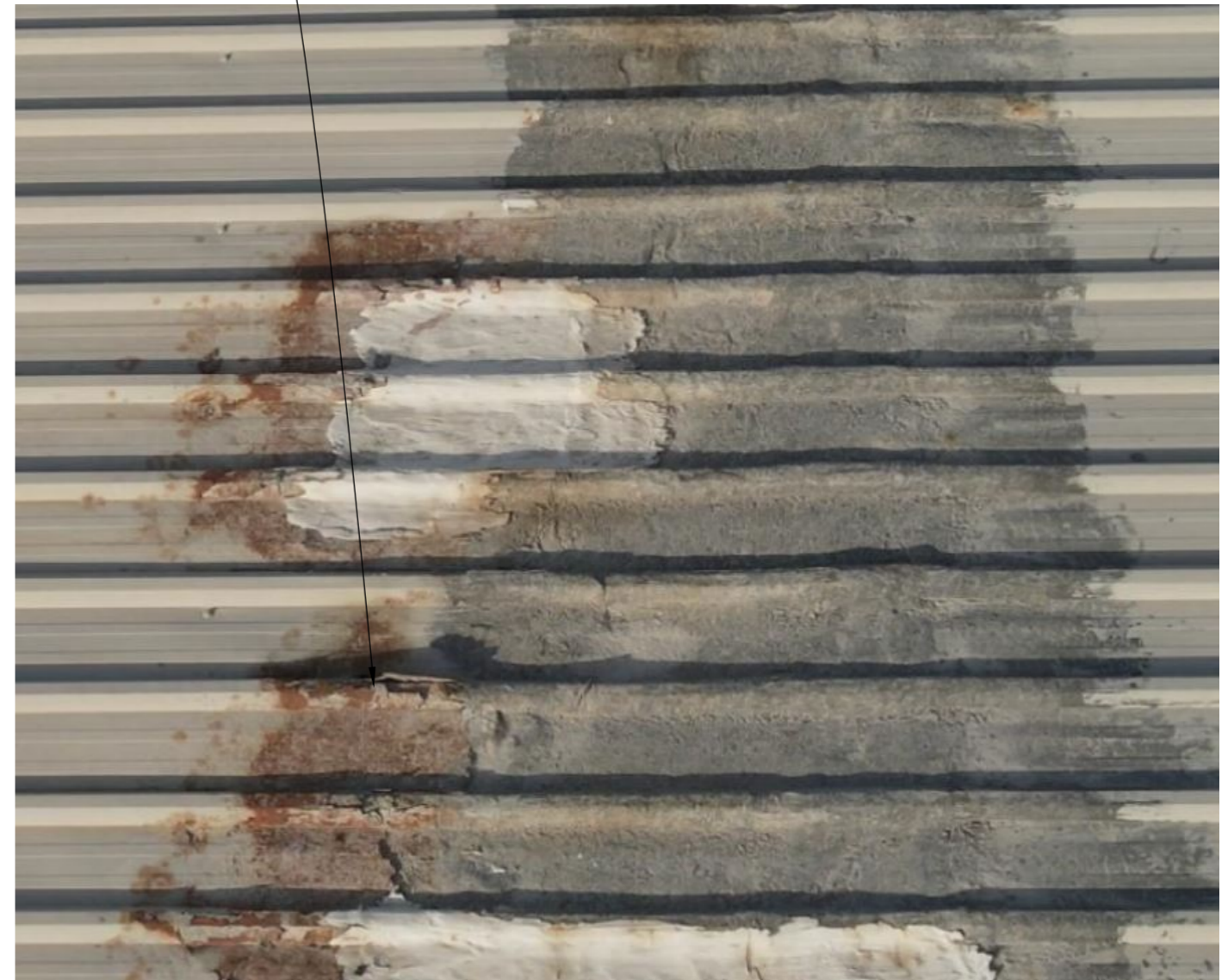


PAGE # 15

BITUMEN APPLIED ON THE END LAPS PROBLEM

SINCE BITUMEN IS MUCH THICKER IN ITS DENSITY, THE WATER COMING FROM THE SLOPE SIDE ACCUMULATES AT THIS POINT AND THEREFORE RESULTING IN RUSTING AND THEREFORE DAMAGE THE SHEETS

YOU CAN EASILY SEE THE CRACKS ON THE BITUMEN DUE TO THE REASON THAT THE CONTRACTION / EXPANSION IS CREATION TENSION AND SINCE AFTER HEATING THE BITUMEN IT BECOMES VERY HARD, IT ULTIMATELY CRACKES UP RESULTING IN LEAKAGE FROM THESE POINTS



DUBAI OFFICE

Office # 505, Block # 3,
Bin Shabib Mall,
Al Qusais, Dubai, U.A.E
Contact # +971 4 882 1839

SAUDI OFFICE

PO Box, 7184,
Al-Dammam-32415
Kingdom of Saudi Arabia
Contact # +966 13 809 2200

Contact Now:

+971 56 727 4205
+971 52 516 2797
sales@promaxdx.com
www.promaxdx.com

SOME OF OUR VALUED CLIENTS



FIBER GLASS ON THE END LAPS PROBLEM



FIBER GLASS IS ALSO A RIGID SOLUTION AND DUE TO NON FLEXIBILITY, THE FIBERS GET CRACKED UP AND THEREFORE RESULT IN LEAKAGE FROM THESE POINTS AS WELL.

JUST LIKE BITUMEN, FIBER GLASS ALSO REQUIRES HEAVY GRIDNING / CLEANING BEFORE ANY APPROPRIATE SOLUTION CAN BE APPLIED ON THE END LAPS / HORIZONTAL JOINTS

DUBAI OFFICE
Office # 505, Block # 3,
Bin Shabib Mall,
Al Qusais, Dubai, U.A.E
Contact # +971 4 882 1839

SAUDI OFFICE
PO Box, 7184,
Al-Dammam-32415
Kingdom of Saudi Arabia
Contact # +966 13 809 2200

Contact Now:
+971 56 727 4205
+971 52 516 2797
sales@promaxdx.com
www.promaxdx.com

SOME OF OUR VALUED CLIENTS



PU SPRAYED ROOF SEVERE PROBLEM



AIR BUBBLES FORM AT THE END LAPS SINCE MOVEMENT CANNOT BE STOPPED AND THEREFORE CONTRACTION / EXPANSION CREATES PROBLEM FOR THE PU COATING AND ULTIMATELY CRACKS UP AT THE END LAPS

THIS HAS TO BE TAKEN OFF COMPLETELY IN ORDER TO APPLY ANY SOLUTION TO THE ROOF. HOWEVER, SCRAPPING OFF PU IS NOT AN EASY TASK

THE PU SOAKS IN WATER AS A SPONGE AND ULTIMATELY RESULTS IN ROOF COLLAPSE

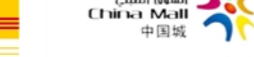


DUBAI OFFICE
Office # 505, Block # 3,
Bin Shabib Mall,
Al Qusais, Dubai, U.A.E
Contact # +971 4 882 1839

SAUDI OFFICE
PO Box, 7184,
Al-Dammam-32415
Kingdom of Saudi Arabia
Contact # +966 13 809 2200

Contact Now:
+971 56 727 4205
+971 52 516 2797
sales@promaxdx.com
www.promaxdx.com

SOME OF OUR VALUED CLIENTS



PU SPRAYED ROOF SEVERE PROBLEM



TAKING THE PU FOAM OFF A ROOF REQUIRES SKILL SET OTHERWISE IT CAN DAMAGE THE ROOF STRUCTURE AS SHOWN HERE SINCE IT IS DENTED FROM MANY PLACES.

THIS ALSO FORCED THE GUTTER TO COLLAPSE CAUSING DAMAGE TO THE PROPERTY AND CAN RESULT IN SERIOUS ACCIDENT IF NOT REMOVED FROM THE ROOF.

PU FOAM SOAKS IN WATER AND ULTIMATELY RESULTED IN DAMAGING THE ENTIRE ROOF



DUBAI OFFICE
Office # 505, Block # 3,
Bin Shabib Mall,
Al Qusais, Dubai, U.A.E
Contact # +971 4 882 1839

SAUDI OFFICE
PO Box, 7184,
Al-Dammam-32415
Kingdom of Saudi Arabia
Contact # +966 13 809 2200

Contact Now:
+971 56 727 4205
+971 52 516 2797
sales@promaxdx.com
www.promaxdx.com

SOME OF OUR VALUED CLIENTS



RUSTING ON END LAPS PROBLEM



THE RUSTING WILL BE FORMED IN A LINE ALWAYS ON THE END LAPS. THIS HAPPENS DUE TO MOISTURE ACCUMULATION AND PASSAGE OF AIR, AS THE SAND / SILICA EATS THE METAL ROOF OUT AND ULTIMATELY RESULTING IN COMPROMISING THE BUILDING SAFETY AND STRUCTURAL STRENGTH

THIS NEEDS TO BE TREATED WITH PROMAX EPDM SOLUTIONS IN ORDER TO STOP OXIDIZATION OF RUSTING FURTHER AND SAVE THE BUILDING STRUCTURE



DUBAI OFFICE
Office # 505, Block # 3,
Bin Shabib Mall,
Al Qusais, Dubai, U.A.E
Contact # +971 4 882 1839

SAUDI OFFICE
PO Box, 7184,
Al-Dammam-32415
Kingdom of Saudi Arabia
Contact # +966 13 809 2200

Contact Now:
+971 56 727 4205
+971 52 516 2797
sales@promaxdx.com
www.promaxdx.com

SOME OF OUR VALUED CLIENTS



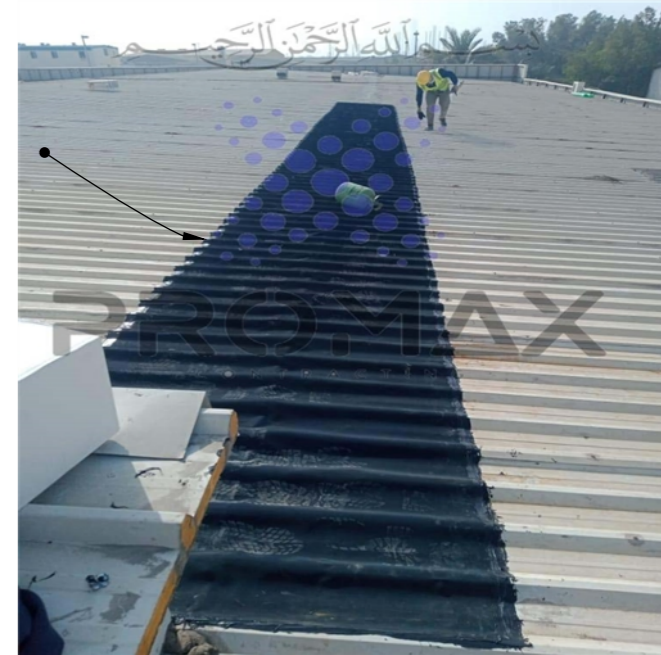
PROMAX EPDM RUBBERIZED SOLUTIONS FOR END LAPS / RUSTING PROBLEM

THE END LAPS NEED TO BE TREATED WITH FLEXIBLE SOLUTION ONLY ALLOWING THE CONTRACTION AND EXPANSION TO HAPPEN

These are to be treated by covering them with EPDM Rubberized Membrane and bonded using Promax Bonding Adhesive which can sustain upto 120 degree Celsius as well as will remain flexible at these points allowing the END Lap for their natural movement without breaking up at these points.

THE WIDTHS ARE DIFFERENTLY APPLIED ACCORDING TO THE SPAN OF RUSTING / DAMAGED AREAS

IF ANY ROOF IS BEYOND REPAIR AND HAVE MULTIPLE PUNCTURES AND RUSTING SPECIALLY IN SINGLE SKIN TYPE ROOF, THEN THE ALTERNATE IS TO COVER THE ENTIRE ROOF WITH EPDM RUBBER BLANKET RATHER THAN DOING THE REPLACEMENT OF THE ROOF WHICH IS ALSO COSTLY AND WILL FORCE TO STOP THE OPERATIONS UNDERNEATH. IN THIS SOLUTION, ALL OPERATIONS CAN CONTINUE AND THERE WILL BE NO HINDERANE WHATSOEVER.



DUBAI OFFICE
Office # 505, Block # 3,
Bin Shabib Mall,
Al Qusais, Dubai, U.A.E
Contact # +971 4 882 1839

SAUDI OFFICE
PO Box, 7184,
Al-Dammam-32415
Kingdom of Saudi Arabia
Contact # +966 13 809 2200

Contact Now:
+971 56 727 4205
+971 52 516 2797
sales@promaxdxb.com
www.promaxdxb.com

SOME OF OUR VALUED CLIENTS



PROMAX BONDING ADHESIVE CAN SUSTAIN UPTO 120 DEGREE HARSH WEATHER CONDITIONS (COLD APPLIED)



TECHNICAL DATA SHEET

Office # 505, Block # 3,
Bin Shabib Mall,
Al Qusais, Dubai, UAE
Ph # +971 4 882 1839
sales@promaxdxb.com
www.promaxdxb.com

PROMAX Super Bond All Weather Sealant

Revision Date : 01 April 2021 Revision No. 3 Number of Pages : 2

PRODUCT DESCRIPTION

PROMAX Super Bond All Weather Sealant is a high-performance, neutral cure weather resistance silicone sealant. It has non-corrosive property, 50% joint movement capability and low Tensile strength. It provides strong bonds to a variety of construction materials. Low string upon gunning, ease of application and ready to use. It has an excellent adhesion to glass, aluminium, glazed surfaces and metals, plastics, tiles, wood, rubber, concrete and other building materials.

TECHNICAL PROPERTIS

Properties	Test Method	Unit	Specifications
Chemical Base			1-C Silicone
Cure Mechanism			Moisture
Cure Type			Neutral
Joint Movement Capability	ASTM C 719	%	+/-50
As Supplied @ 25°C, 50% RH			
Color			Black, Grey, White
Consistency			Homogeneous paste
Density	ASTM D 1475		1.27 ± 0.02
Flow Properties	ASTM C 639	mm	0 (Non-sag)
Skin Over Time	ASTM C 679	minutes	Approx. 8
Tack Free Time	ASTM C 679	minutes	Approx. 13
Depth Cure, 24 hrs	Lab Test	mm	~ 2.4
As Cured - 7 Days @ 25°C, 50% RH			
Hardness (Shore A)	ASTM D 2240	Points	30 - 35
Tensile Strength	ASTM D 412	N/mm ²	≤ 1.80
Elongation	ASTM D 412	%	≤ 750
Young's Modulus	ASTM D 412	MPa	≤ 0.35
Service Temp.		°C	-40 to +250
Application Temp.		°C	5 to 45

Note:
* Curing time (Skin Over Time & Tack Free Time) may vary depending on climatic condition during application.
* Information on this data sheet is subject to change without prior notice and should not be used for writing specifications

TYPICAL USES

- Interior and Exterior Applications
- Sealing dynamically moving joints such as expansion and control joints
- Concrete panel joints
- Perimeter joint sealing (windows, doors panels, and frames, etc.)
- Façade & curtain wall application
- Good bonding between metal surface and rubbers like EPDM

KEY FEATURES

- Non-Corrosive
- Non-Stain
- UV & Weather-Resistance
- Excellent Adhesion

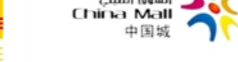


DUBAI OFFICE
Office # 505, Block # 3,
Bin Shabib Mall,
Al Qusais, Dubai, U.A.E
Contact # +971 4 882 1839

SAUDI OFFICE
PO Box, 7184,
Al-Dammam-32415
Kingdom of Saudi Arabia
Contact # +966 13 809 2200

Contact Now:
+971 56 727 4205
+971 52 516 2797
sales@promaxdx.com
www.promaxdx.com

SOME OF OUR VALUED CLIENTS



**PROMAX BONDING ADHESIVE
CAN SUSTAIN UPTO 120 DEGREE
HARSH WEATHER CONDITIONS
(COLD APPLIED)**



مختبرات ويمبي ش.ذ.م.م. WIMPEY LABORATORIES L.L.C.

**TEST REPORT ON HEAT RESISTANCE
ASTM D2485-18**

Client	Promax Carpentry and Flooring Contracting Co. Dubai, UAE.		
Sample Description	Sheet	Lab Report No.	WD-R-220117-0564
Source	Promax Carpentry and Flooring Contracting Co.	Request No.	WD-Q-220117-152
Room Temperature	23°C	Sample No.	WD-S-220117-0526
Relative Humidity	50%	Date Received	17/01/2022
Test Method	ASTM D2485-18	Date Tested	18/01/2022-19/01/2022
Sample brought in by	Client	Date Reported	19/01/2022
Mixing Ratio	N.G	Dry Film Thickness	29.3 Micron
Wimpey Ref. No.	220117-14	Tested By	SI

Heat Resistance is a resistance offered by a material to various temperatures without showing any change in physical properties.

Procedure

- The cured panels were exposed to hot air oven for 24 hours at 120°C.
- After completion of test duration the specimen removed from the furnace and cool it to room temperature.
- The specimen condition was evaluated after the specimen is cooled to room temperature

Test Result

Elevated temperature testing

Test		Results
Exposure 1 Day		-
Dry Film Thickness	Min-max (µm)	24.2-54.1
	Avg (µm)	29.3
Observation		No Failure observed
Result		Satisfactory

Remarks: None.

Signed for and on behalf of Wimpey Laboratories L.L.C.

S. Sarath Kumar

S. Sarath Kumar
Head of Department

Test result relate only to the samples tested.

This report shall not be reproduced except in full, without the written approval of the Laboratory.
-End of text-



DUBAI OFFICE
Office # 505, Block # 3,
Bin Shabib Mall,
Al Qusais, Dubai, U.A.E
Contact # +971 4 882 1839

SAUDI OFFICE
PO Box, 7184,
Al-Dammam-32415
Kingdom of Saudi Arabia
Contact # +966 13 809 2200

Contact Now:
+971 56 727 4205
+971 52 516 2797
sales@promaxdx.com
www.promaxdx.com

SOME OF OUR VALUED CLIENTS



**PROMAX EPDM MEMBRANE
10-15 YEAR WARRANTY
FOR ANY LEAKAGE PROBLEM IN THE ROOF**

(PRODUCT: AVERAGE LIFE CYCLE = 22 YEARS)



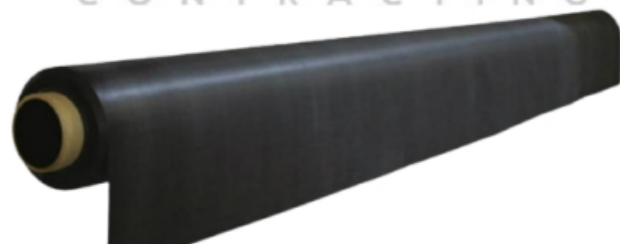
Product Data

TECHNICAL SPECIFICATIONS

Decomposition of concrete is a common phenomenon particularly in water less desert regions or in areas where high humidity and temperatures are prevalent such as in coastal regions. The excessive heat and dry winds cause shrinkage and cracking to concrete. The salts present in water (ground and atmospheric) cause disintegration of concrete by chemical reactions. Concrete is a calcium-aluminum-hydrate crystal which reacts with sulfate salts producing Calcium-Sulpho-Aluminate crystals, which have 227% greater volume than the original concrete crystals leading to cracks and deterioration in concrete.

EPDM membrane based roofing protection, is an application developed in the USA almost four decades ago and continues to be one of the most popular applications of the polymer.

EPDM Single Ply Waterproofing System is specially designed to protect all reinforced concrete structures on or under the ground in the Arabian Peninsula. Due to exceptional weather and water resistance, TR-EPDM sheets are used for the protection of rooftops of commercial buildings, residential buildings, Airport Terminal buildings and any structure where protection from rain water seepage is of prime importance.



TECHNICAL SPECIFICATIONS - EPDM WATERPROOFING MEMBRANE

NO.	PROPERTY	TEST STANDARD	SPECIFIED VALUES**	TYPICAL
1	Specific Weight, kg/m ²	0.75 mm thick sheet	--	0.90±0.20
		1.00 mm thick sheet	--	1.20±0.20
		1.14 mm thick sheet	--	1.36±0.20
		1.20 mm thick sheet	--	1.44±0.20
		1.50 mm thick sheet	--	1.80±0.20
		2.00 mm thick sheet	--	2.40±0.20
2	Tolerance on nominal gauge	ASTM D 412	±10%	± 10%
3	Texture & Color	Visual Check	--	Fabric Finish, Black
4	Tensile strength, min., MPa	ASTM D 412	9.0	10.5
5	Elongation at break, min., %	ASTM D 412	300	475
6	Tear strength, min., kN/m	ASTM D 624 Die C	26.3	34.0
7	Factory Seam Strength, Min, Kn	ASTM D 816 Method B (Modified)	8.8 OR Membrane Rupture	Membrane Rupture
8*	Brittleness Temperature, °C	ASTM D 746	- 45	- 55
9*	Resistance to heat ageing (Properties after 168 hrs. exposure @ 116 °C)	Resistance to heat ageing	ASTM D 573	--
		Tensile strength, min., MPa	ASTM D 412	8.3
		Elongation at break, %	ASTM D 412	200
		Tear strength, kN/m	ASTM D 624	21.9
10*	Ozone Resistance Condition after exposure to 100 pphm ozone in air for 168 hrs @ 40 °C (Sample at 50% strain)	ASTM D 1149	No Cracks	No Cracks
11*	Resistance to water absorption, Change in mass, max, after 168 hrs immersion @ 70 °C, %	ASTM D 471	+ 8, - 2	+ 1.8
12*	Resistance to outdoor (UV) weathering Xenon Arc, 7560 kJ/m ² total radiant exposure at 0.70 W/m ² irradiance, 80 °C black panel temperature	ASTM G 151	No Cracks, No Cracking	No Cracks, No Cracking
13*	Sheet Composition, Weight % of Polymer (EPDM), min, %	ASTM D 297	--	100
14*	Water Vapor Permeability, max, perms	ASTM E 96 (Proc B or BW)	0.10	0.05

* Not a routine quality control test due to the time required / complexity of the test. However, all tests are performed on a statistical basis to ensure overall long-term performance of the sheeting.

ASTM D 4637 – Standard Specification for EPDM Sheet Used In Single-Ply Roof Membrane

ASTM D6134 – Standard Specification for Vulcanized Rubber Sheets Used in Waterproofing Systems (Type I)

Product Data

Product Data

DUBAI OFFICE
Office # 505, Block # 3,
Bin Shabib Mall,
Al Qusais, Dubai, U.A.E
Contact # +971 4 882 1839

SAUDI OFFICE
PO Box, 7184,
Al-Dammam-32415
Kingdom of Saudi Arabia
Contact # +966 13 809 2200

Contact Now:
+971 56 727 4205
+971 52 516 2797
sales@promaxdx.com
www.promaxdx.com

SOME OF OUR VALUED CLIENTS



SMOKE VENT REPAIR & MAINTENANCE



• LOUVER'S ALIGNMENT

LOUVRE
MECHANISM
REPAIR

INTERNAL
GUTTER
ALIGNMENT FOR
SMOOTH WATER
DISSIPATION

LOUVER
RUBBER
REPLACEMENT

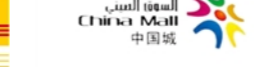


DUBAI OFFICE
Office # 505, Block # 3,
Bin Shabib Mall,
Al Qusais, Dubai, U.A.E
Contact # +971 4 882 1839

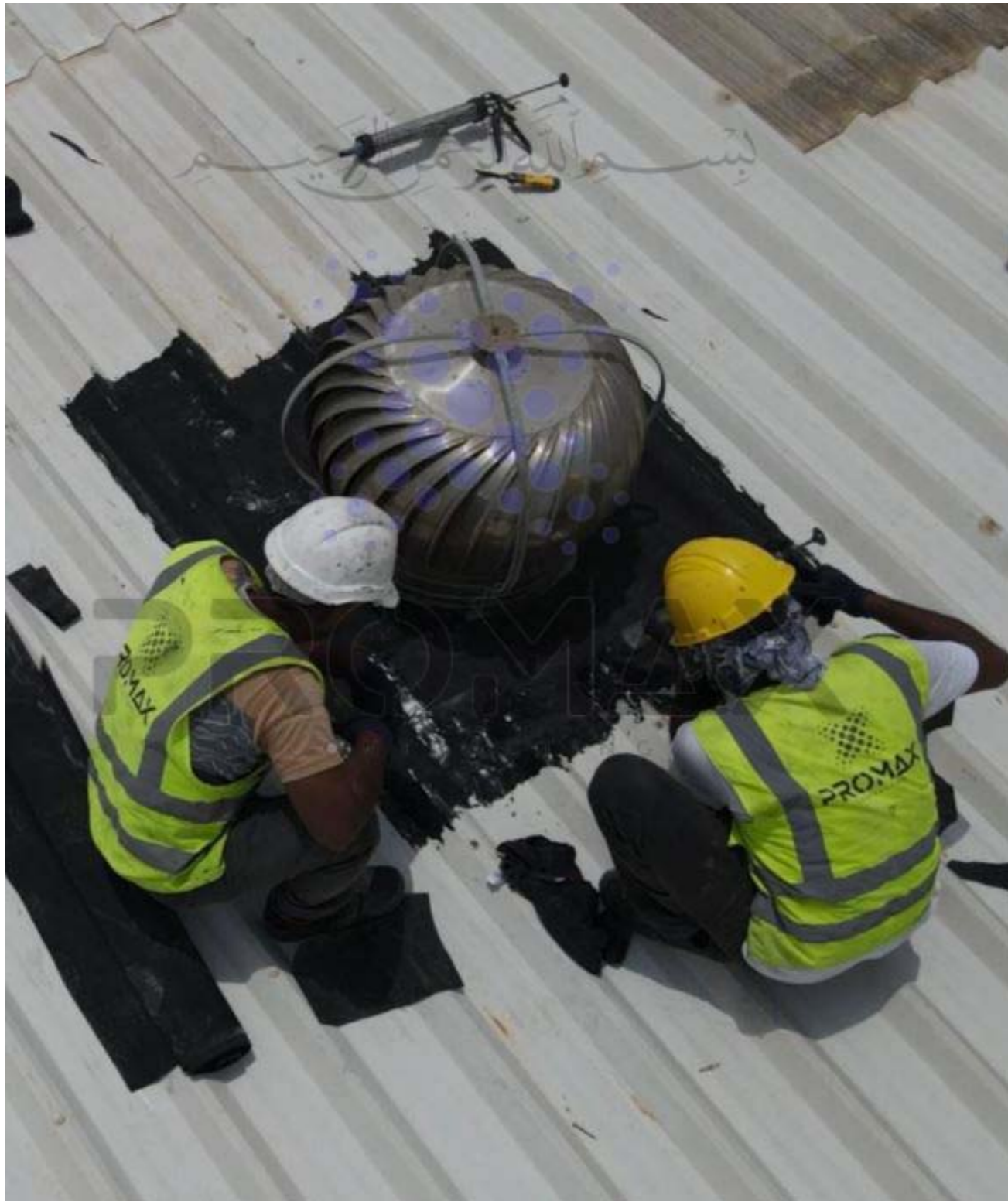
SAUDI OFFICE
PO Box, 7184,
Al-Dammam-32415
Kingdom of Saudi Arabia
Contact # +966 13 809 2200

Contact Now:
+971 56 727 4205
+971 52 516 2797
sales@promaxdx.com
www.promaxdx.com

SOME OF OUR VALUED CLIENTS



WIND DRIVEN TURBINE - ROOF EXHAUST VENTILATORS DESIGN, FABRICATION, SUPPLY & INSTALLATION WITH WATERPROOFING



Wind Driven Turbine Ventilators



*Constructed with super light weight aluminium alloy
with revolutionary Fluorine Carbon Polyester Coating*



> RESIDENTIAL > COMMERCIAL > INDUSTRIAL

DUBAI OFFICE

Office # 505, Block # 3,
Bin Shabib Mall,
Al Qusais, Dubai, U.A.E
Contact # +971 4 882 1839

SAUDI OFFICE

PO Box, 7184,
Al-Dammam-32415
Kingdom of Saudi Arabia
Contact # +966 13 809 2200

Contact Now:

+971 56 727 4205
+971 52 516 2797
sales@promaxdx.com
www.promaxdx.com

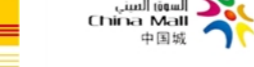
SOME OF OUR VALUED CLIENTS



مجموعة السركال
AL SERKAL GROUP



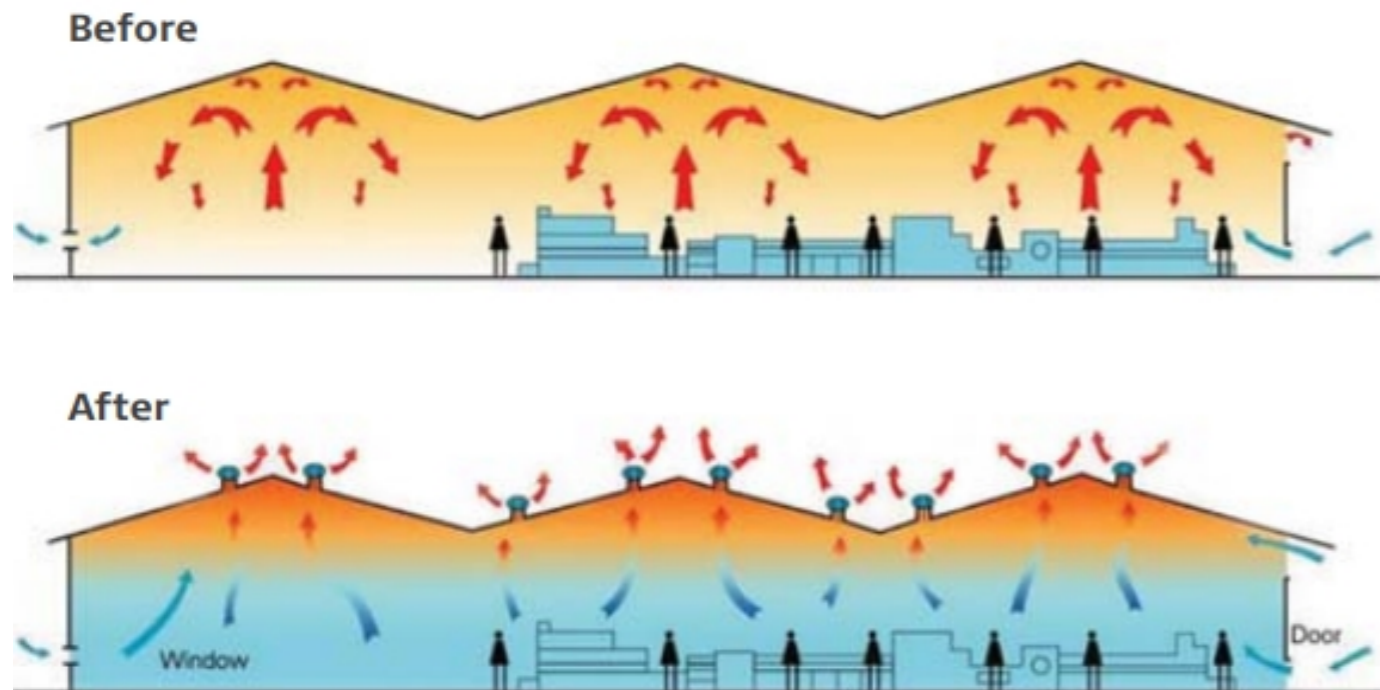
AeroGulf
Services



WIND DRIVEN TURBINE - ROOF EXHAUST VENTILATORS DESIGN, FABRICATION, SUPPLY & INSTALLATION WITH WATERPROOFING

How it Works

our ventilators work by drawing stale air upwards and out of the building. This air is then replaced by fresh air which is drawn in by way of a convection current through other openings in the building.



Key Benefits

- Low cost
- Easy Installation
- Fits all roof types
- Efficient
- Silent running
- Corrosion resistant
- Eco-friendly
- Fully waterproof
- 5 sizes available
- No wiring
- No maintenance
- No ongoing costs

EXTRACTS:

- Hot, humid air
- Polluted air and fumes
- Condensation
- Smells and animal odours
- Corrosive air

DUBAI OFFICE
Office # 505, Block # 3,
Bin Shabib Mall,
Al Qusais, Dubai, U.A.E
Contact # +971 4 882 1839

SAUDI OFFICE
PO Box, 7184,
Al-Dammam-32415
Kingdom of Saudi Arabia
Contact # +966 13 809 2200

Contact Now:
+971 56 727 4205
+971 52 516 2797
sales@promaxdx.com
www.promaxdx.com

SOME OF OUR VALUED CLIENTS



WIND DRIVEN TURBINE - ROOF EXHAUST VENTILATORS DESIGN, FABRICATION, SUPPLY & INSTALLATION WITH WATERPROOFING

RANGE STARTING FROM 300MM UPTO 900MM

Installation

Each ventilator is boxed with full installation instructions, and a 15 year manufacturer's warranty. Ideally ventilators should be positioned as close to the peak of the roof as possible. If this is not an option, a cowl flashing can be made to fix further down the roof.

Superiority

- 30% more venting efficiency than Stainless Steel ventilators
- Ventilators is suitable for corrosive fume extraction and coastal areas due to the anti-corrosive fluoro carbon polyester coating.

Construction

our ventilators are constructed using a high quality revolutionary aluminium alloy with a fluoro carbon polyester coating.

This Coating creates a corrosion resistant ventilator superior to others on the market. Its super light weight allows for a greater speed spin sensitivity starting at only 0.12 metres per second.

our ventilators contain a high quality sealed and self-lubricating NSK axial bearing and reinforced supports.

Note: Ventilators not powdercoated by Roofquip Ltd will result in the warranty being void. Please contact us to discuss powdercoating options

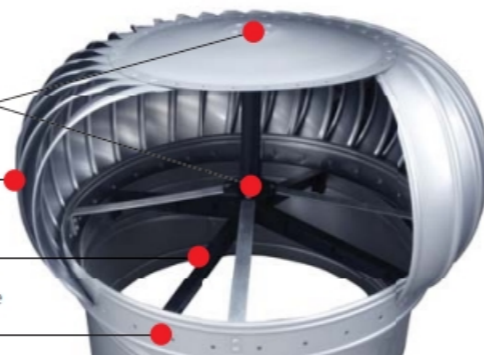


NSK axial bearing, sealed, self lubricating

32 pieces dual-arc vanes made from fluorine carbon coating aluminum alloy top keep rain from flowing backwards.

Fireproofing reinforced nylon plastic support with high strength, high tenacity and easy recovering from deformation

0.7mm Korea Puxiang 304/2B stainless steel plate as medium circle

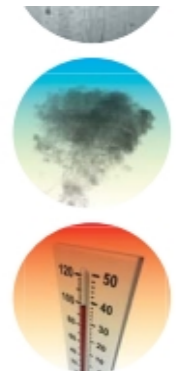


Residential / Small Applications

"An average family with children can release in excess of 12 litres of moisture into the air every 24 hours!"

Damp warm conditions without air movement can encourage dust mites, mould and condensation- all potential health hazards for your family or workplace.

The simple action of ventilators also keeps energy costs down while ventilating any building, from a small home to a large warehouse.



300mm

- Houses - Sheds - light Commercial - light Industrial

House Size m ²	Number of ventilators required
90 - 120	1 - 2
130 - 180	2 - 3
200 - 350	3 - 4



Includes: Base Flashing and Variable Pitch to fit roofs up to 30°

200mm

Ideal for fixing to pipes or ducting penetrating the roof, the 200mm has a fixed throat without a base flashing.



Commercial/Industrial Applications

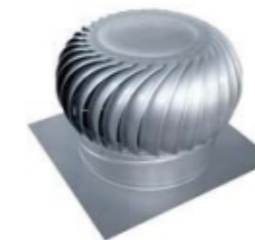
PROMAX ventilators reduce heat and fumes which creates a better working environment. Adequate ventilation has been proven to enhance staff effectiveness and prolong shelf life of stored goods.

500mm 600mm

- Factories
- Farm Sheds
- Workshops
- Gyms
- Halls

Includes: Base Flashing and Variable Pitch to fit roofs up to 22°.

A square to round base adaptor can be made to allow for fitting up to 45°.



900mm

An industrial flat vane ventilator made from Aluminium (without fluoro coating). Includes: Base flashing and variable pitch to fit roofs up to 22°.



DUBAI OFFICE
Office # 505, Block # 3,
Bin Shabib Mall,
Al Qusais, Dubai, U.A.E
Contact # +971 4 882 1839

SAUDI OFFICE
PO Box, 7184,
Al-Dammam-32415
Kingdom of Saudi Arabia
Contact # +966 13 809 2200

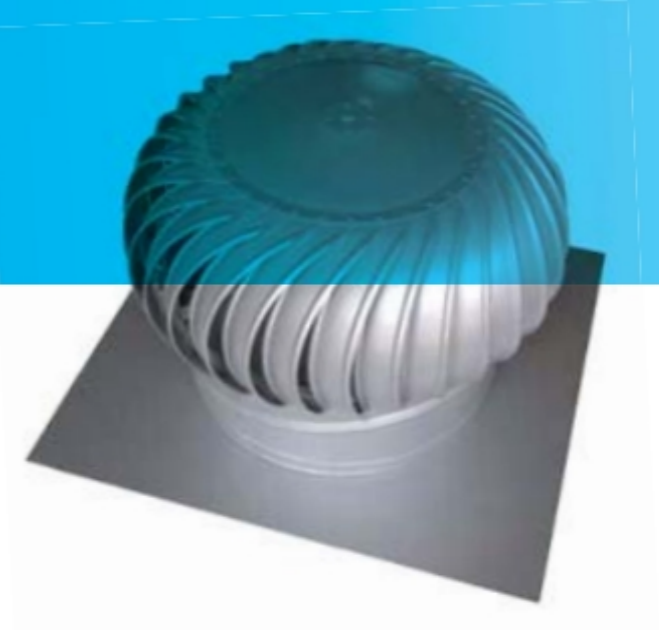
Contact Now:
+971 56 727 4205
+971 52 516 2797
sales@promaxdx.com
www.promaxdx.com

SOME OF OUR VALUED CLIENTS



**WIND DRIVEN TURBINE - ROOF EXHAUST VENTILATORS
DESIGN, FABRICATION, SUPPLY & INSTALLATION WITH WATERPROOFING**

How many ventilators do I need?



Commercial/Industrial

1. Calculate the buildings M^3 (length x width x height)
2. Determine the number of air changes required for the building type. (Table 1)
3. To calculate the venting capacity m^3/h (Table 2), you will need to know:
 - Typical area wind speed (1m/s to 5m/s).
 - Temperature difference between indoors & outdoors (0°).
 - Roof height.
4. Insert the information into the formula to calculate total number of ventilators required.

Table 1

Recommend* No. of air changes per hour			
Building Type	Air Changes P/Hr	Building Type	Air Changes P/Hr
Warehouses	3-5	Laundries	7-15
Factories/workshops	3-8	Welding Workshops	12-21
Gyms/sport halls	3-8	Animal Housing	10-50
Assembly Halls	6-12	Garages	6-12
Toilets	12-15	Cooking Factories	6-12

*Air change rate must conform to local health department's code specific to building type.

DUBAI OFFICE
Office # 505, Block # 3,
Bin Shabib Mall,
Al Qusais, Dubai, U.A.E
Contact # +971 4 882 1839

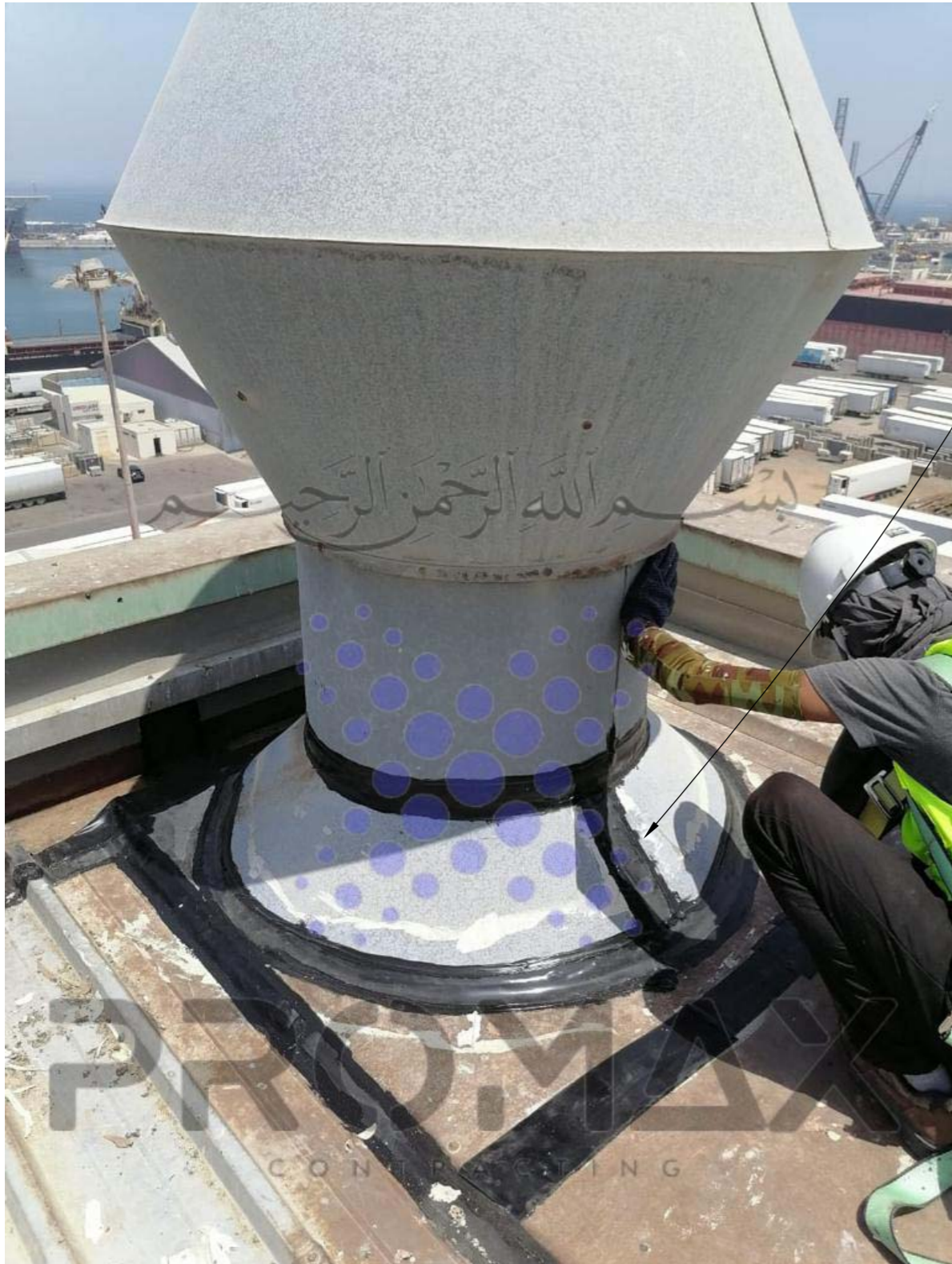
SAUDI OFFICE
PO Box, 7184,
Al-Dammam-32415
Kingdom of Saudi Arabia
Contact # +966 13 809 2200

Contact Now:
+971 56 727 4205
+971 52 516 2797
sales@promaxdx.com
www.promaxdx.com

SOME OF OUR VALUED CLIENTS

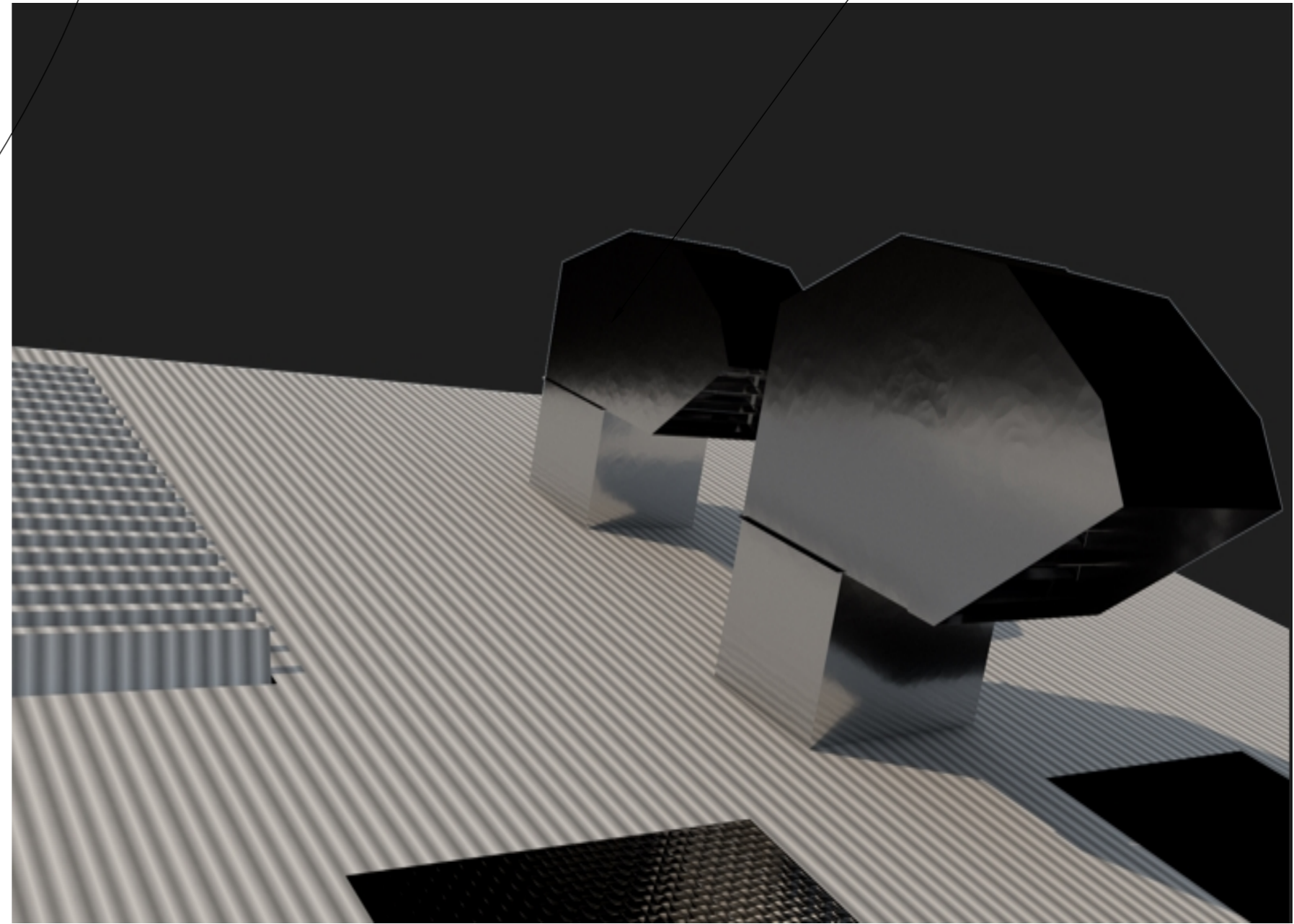


DUCTING / FABRICATION WORKS WITH WATERPROOFING USING PROMAX EPDM SOLUTIONS



LEAKAGE RECTIFICATION FOR ALL SO

PROMAX HAS FULL ENGINEERING SERVICES PERTAINING TO DUCT FABRICATION WORKS ACCORDING TO THE CLIENT'S REQUIREMENT



DUBAI OFFICE
Office # 505, Block # 3,
Bin Shabib Mall,
Al Qusais, Dubai, U.A.E
Contact # +971 4 882 1839

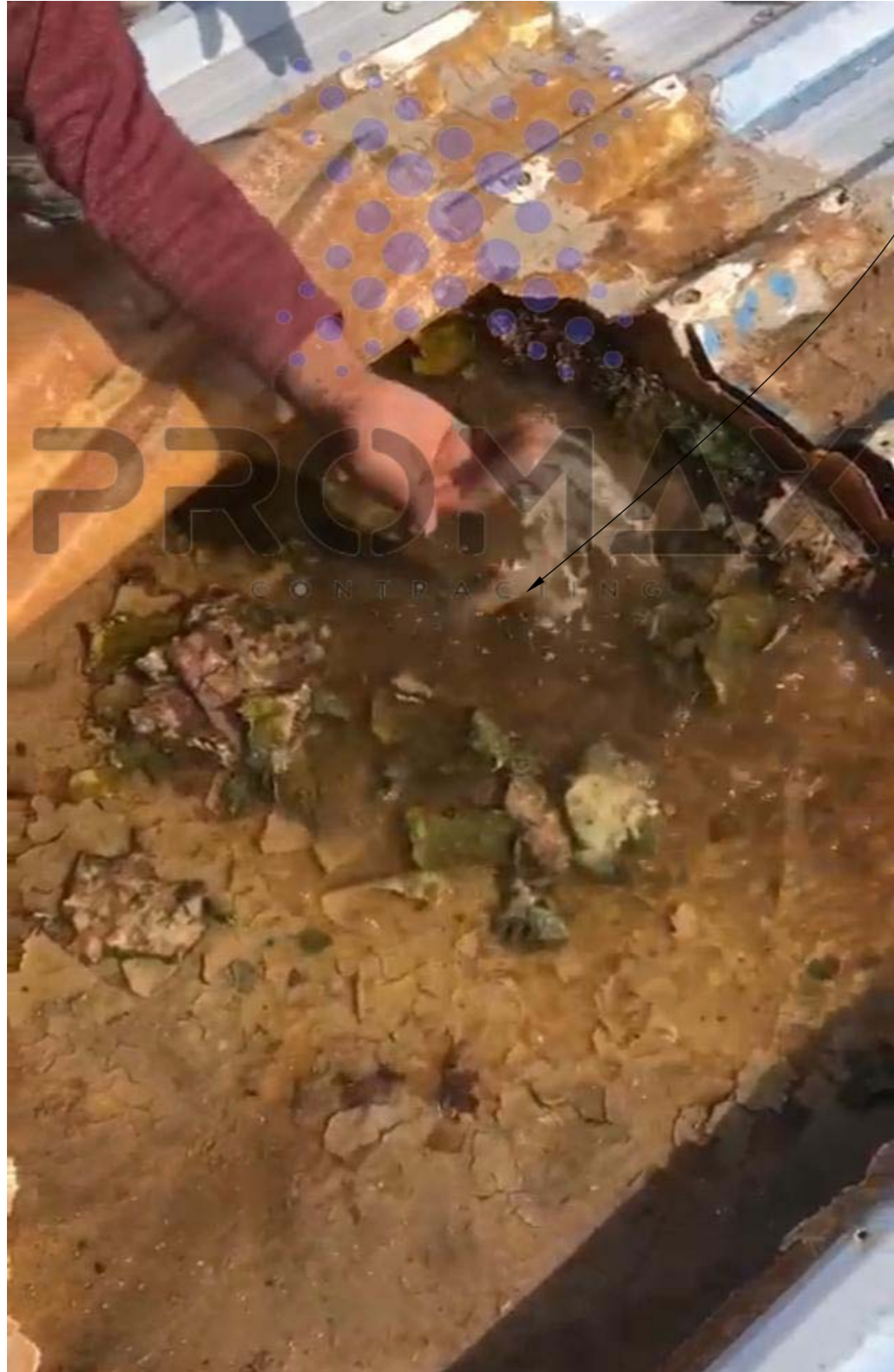
SAUDI OFFICE
PO Box, 7184,
Al-Dammam-32415
Kingdom of Saudi Arabia
Contact # +966 13 809 2200

Contact Now:
+971 56 727 4205
+971 52 516 2797
sales@promaxdx.com
www.promaxdx.com

SOME OF OUR VALUED CLIENTS



SINGLE SKIN / DOUBLE SKIN SKYLIGHTS PROBLEMS REPLACEMENT + WATERPROOFING SOLUTIONS



THE DOUBLE SKIN SKYLIGHT CONTAINS WATER ACCUMULATION WITHIN THE 2 FIBER WALLS AND THEN KEEP ON DRIPPING FOR LONGER PERIODS AS THE UPPER LAYER IS DAMAGED SINCE ITS FIBER HAIRS GIVE UP ITS STRENGTH

THE SINGLE SKIN SKYLIGHT ONLY HAS ONE TOP LAYER WHICH GIVES UP AFTER 3-4 YEARS SINCE THE FIBER IS THE MOST WEAKEST POINT IN THE ENTIRE ROOF.

DUE TO CONSTANT INTERACTION WITH SAND / SILICA / MOISTURE UV RAYS, THE FIBER GETS EATEN OUT AND ULTIMATELY STARTS LEAKING FROM THE MIDDLE POINTS



DUBAI OFFICE
Office # 505, Block # 3,
Bin Shabib Mall,
Al Qusais, Dubai, U.A.E
Contact # +971 4 882 1839

SAUDI OFFICE
PO Box, 7184,
Al-Dammam-32415
Kingdom of Saudi Arabia
Contact # +966 13 809 2200

Contact Now:
+971 56 727 4205
+971 52 516 2797
sales@promaxdx.com
www.promaxdx.com

SOME OF OUR VALUED CLIENTS



SINGLE SKIN / DOUBLE SKIN SKYLIGHTS PROBLEMS REPLACEMENT + WATERPROOFING SOLUTIONS

PROMAX ENGINEERING TEAM HAS PROPER TOOLS TO DO ACCURATE MEASUREMENTS OF THE SHEET PROFILE SINCE THERE ARE DOZENS OF VARIATIONS WHICH ARE BEING MANUFACTURED BY DIFFERENT ROOFING SUPPLIERS. A SMALL MISTAKE CAN RESULT IN PROFILE MISMATCH AND ULTIMATELY RESULT IN IMPROPER MATCHING

YOU CAN SEE THE HAIRLINE FIBER CRACKS WHICH IS USUALLY NOT VISIBLE TO THE NAKED EYE, BUT DURING RAIN, IT STARTS TO LEAK FROM THE MIDDLE



DUBAI OFFICE
Office # 505, Block # 3,
Bin Shabib Mall,
Al Qusais, Dubai, U.A.E
Contact # +971 4 882 1839

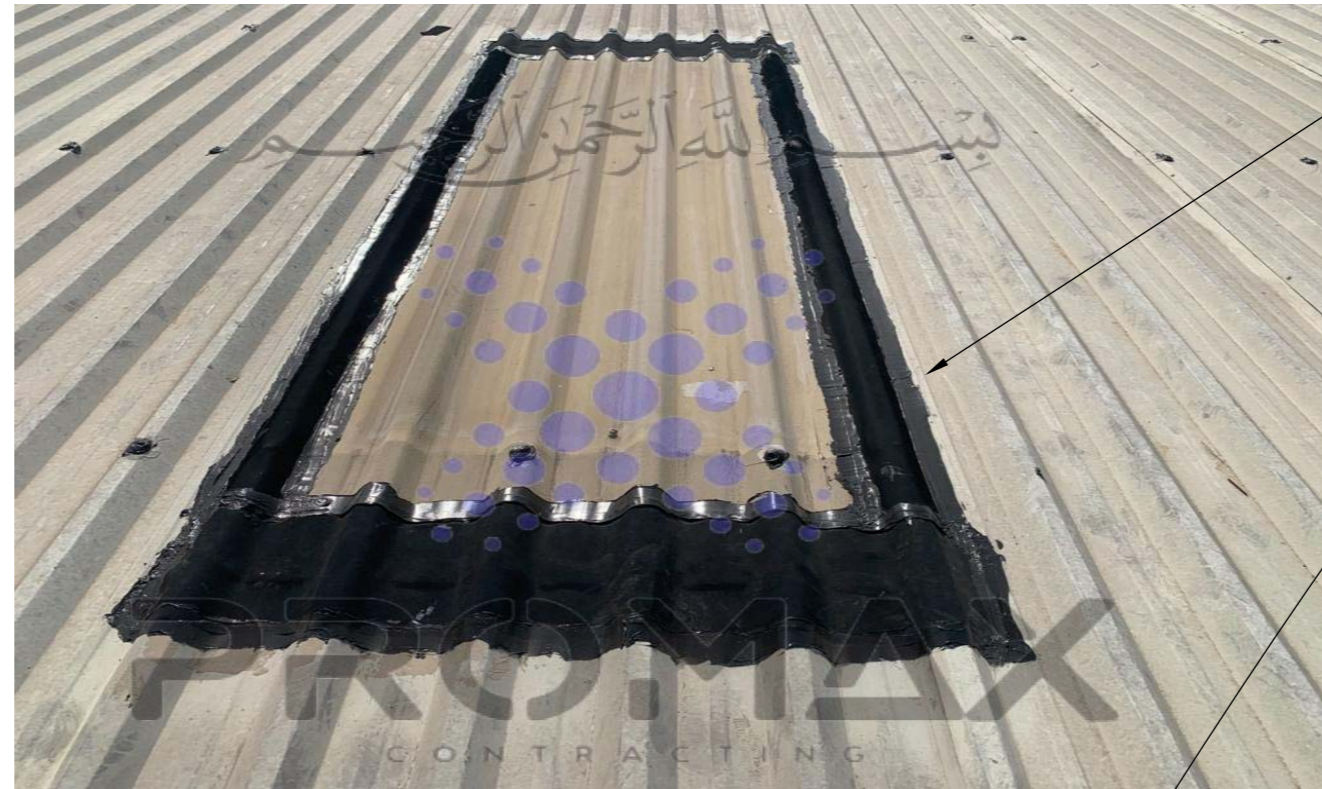
SAUDI OFFICE
PO Box, 7184,
Al-Dammam-32415
Kingdom of Saudi Arabia
Contact # +966 13 809 2200

Contact Now:
+971 56 727 4205
+971 52 516 2797
sales@promaxdx.com
www.promaxdx.com

SOME OF OUR VALUED CLIENTS



SINGLE SKIN / DOUBLE SKIN SKYLIGHTS PROBLEMS REPLACEMENT + WATERPROOFING SOLUTIONS



ALL 4 SIDES
WATERPROOFING
SOLUTION

2 SIDES
WATERPROOFING
SOLUTION

With ageing of the skylights, they are the most weakest part of the roof, as they are made up of fiber glass and Constant Sand / Silica / Moisture & Heat totally eats them out with the passage of time and then start to leak at the side joints.

They will be sealed from either 2 sides or all 4 sides with PROMAX EPDM Membrane with Promax Bonding Adhesive with tolerance of upto 120 Degree Celsius depending on the site conditions.

DUBAI OFFICE
Office # 505, Block # 3,
Bin Shabib Mall,
Al Qusais, Dubai, U.A.E
Contact # +971 4 882 1839

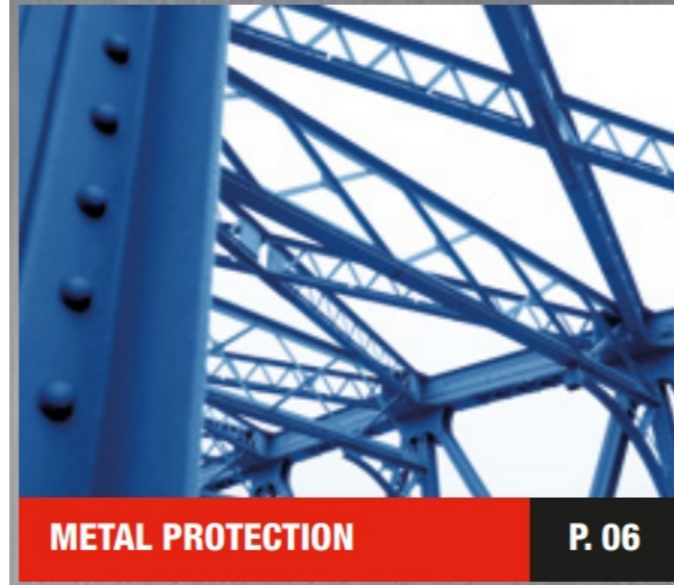
SAUDI OFFICE
PO Box, 7184,
Al-Dammam-32415
Kingdom of Saudi Arabia
Contact # +966 13 809 2200

Contact Now:
+971 56 727 4205
+971 52 516 2797
sales@promaxdx.com
www.promaxdx.com

SOME OF OUR VALUED CLIENTS



INDUSTRIAL GRADE PAINT WORKS FOR CLADDING AND EXTERNAL FACADE

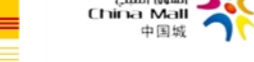


DUBAI OFFICE
Office # 505, Block # 3,
Bin Shabib Mall,
Al Qusais, Dubai, U.A.E
Contact # +971 4 882 1839

SAUDI OFFICE
PO Box, 7184,
Al-Dammam-32415
Kingdom of Saudi Arabia
Contact # +966 13 809 2200

Contact Now:
+971 56 727 4205
+971 52 516 2797
sales@promaxdx.com
www.promaxdx.com

SOME OF OUR VALUED CLIENTS



INDUSTRIAL GRADE PAINT WORKS FOR CLADDING AND EXTERNAL FACADE

METALLICS

SOLIDS

SOLIDS



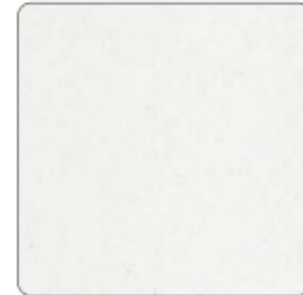
SHINING SILVER



ANODISED SATIN BROWN



GOLD METALLIC



PEARL WHITE



FLAT WHITE



TRAFFIC WHITE



MONUMENT MATT



DEEP RED



ORIENT RED



CHAMPAGNE



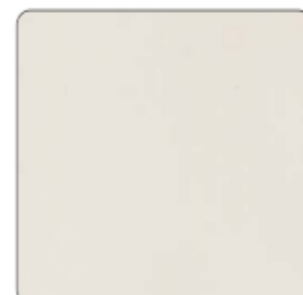
COPPER



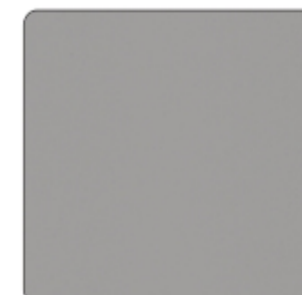
MEDIUM BRONZE



OFF WHITE



CREAM



SIGNAL GREY



ORANGE



ECO GREEN



YELLOW



MOUSE GREY METALLIC



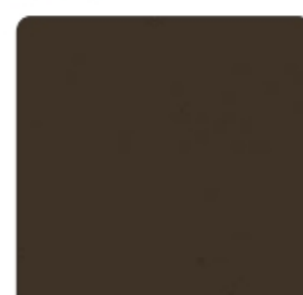
SMOKE SILVER METALLIC



DARK GREY METALLIC



KHAKI GREY



CHARCOAL GREY



TANK GREY



LIME GREEN



PROCESS BLUE



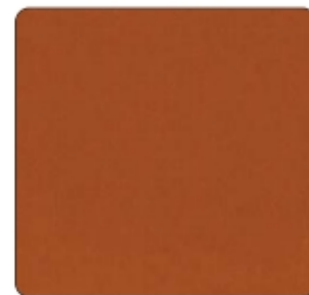
DEEP BLUE



NATURAL ZINC



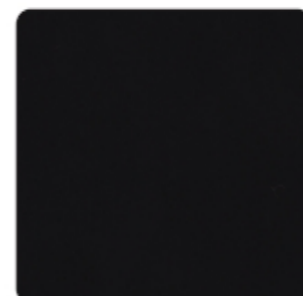
BRUSHED SILVER



BRUSHED COPPER



DARK GREY



BLACK



SATIN BLACK

DUBAI OFFICE
Office # 505, Block # 3,
Bin Shabib Mall,
Al Qusais, Dubai, U.A.E
Contact # +971 4 882 1839

SAUDI OFFICE
PO Box, 7184,
Al-Dammam-32415
Kingdom of Saudi Arabia
Contact # +966 13 809 2200

Contact Now:
+971 56 727 4205
+971 52 516 2797
sales@promaxdx.com
www.promaxdx.com

SOME OF OUR VALUED CLIENTS



INDUSTRIAL GRADE PAINT WORKS FOR CLADDING AND EXTERNAL FACADE



SN 8001
NCS S 0500-N
Stocked: M-HM-HG



SN 8002
NCS S 1000-N
Stocked: M-HM



SN 8003
NCS S 2000-N
Stocked M



SN 8020
NCS S 3000-N
Stocked: M



SN 8004
NCS S 4000-N



SN 8005
NCS S 5000-N



SN 8006
NCS S 6000-N



SN 8007
NCS S 7000-N



SN 8008
NCS S 8000-N
Stocked M-HM



SN 8900
NCS S 9000-N
Stocked M-HM



SN 9204
NCS 8404-G85Y



SN 8010
NCS S 0502-Y
Stocked M-HM



SN 8013
NCS S 1002-G50Y



SN 9205
NCS S 1502-Y



SN 3413
NCS S 1020-Y10R



SN 8011
NCS S 1005-Y20R



SN 4072
NCS S 2010-Y10R



SN 4012
NCS S 2010-Y30R



SN 4350
NCS S 3010-Y30R



SN 4500
NCS S 2020-Y40R



SN 4357
NCS S 3030-Y50R



SN 4353
NCS S 3010-Y50R



SN 9206*
NCS S 5010-Y10R



SN 9207
NCS S 5010-Y30R



SN 9202*
NCS S 4550-Y30R



SN 9203*
NCS 6621-Y55R



SN 9200*
NCS S 1070-Y10R



SN 9201*
NCS S 0560-G80Y



SN 9102*
NCS 0876-Y44R



SN 9101*
NCS S 2070-Y60R



SN 9100*
NCS S 1580-Y90R



SN 9103
NCS S 7020-R



SN 2008
NCS S 4550-Y80R



SN 9104*
NCS 3631-R22B



SN 9105
NCS S 1020-R20B



SN 9106
NCS S 3010-R50B



SN 7013
NCS S 2010-R70B



SN 9107
NCS S 5030-R60B



SN 9108
NCS S 5010-R70B



SN 9109*
NCS 0946-Y94R



SN 9400*
NCS S 4050-R90B



SN 7534
NCS S 5040-R80B



SN 9401
NCS S 8010-R90B



SN 9402
NCS S 2010-R90B



SN 7020
NCS S 5010-R90B



SN 6520
NCS S 3020-B10G



SN 5550
NCS S 2040-B10G



SN 9305
NCS S 0540-B30G



SN 9310
NCS S 2010-B30G



SN 6510*
NCS S 2005-B20G

DUBAI OFFICE
Office # 505, Block # 3,
Bin Shabib Mall,
Al Qusais, Dubai, U.A.E
Contact # +971 4 882 1839

SAUDI OFFICE
PO Box, 7184,
Al-Dammam-32415
Kingdom of Saudi Arabia
Contact # +966 13 809 2200

Contact Now:
+971 56 727 4205
+971 52 516 2797
sales@promaxdx.com
www.promaxdx.com

SOME OF OUR VALUED CLIENTS



INDUSTRIAL GRADE PAINT WORKS FOR CLADDING AND EXTERNAL FACADE

BCG Colours

UB9016 Traffic White	UB9010 Pure White	UB1013 Oyster White	UB1015 Light Ivory	UB1014 Ivory	UB7044 Silk Grey	UB7030 Stone Grey	UB7005 Mouse Grey
UB9002 Grey White	UB7035 Light Grey	UB7004 Signal Grey	UB7000 Squirrel Grey	UB7011 Iron Grey	UB7016 Anthracite Grey	UB7022 Umbra Grey	UB9005 Jet Black
UB6019 Pastel Green	UB6021 Pale Green	UB6018 Yellow Green	UB6037 Pure Green	UB6029 Mint Green	UB6026 Opal Green	UB6005 Moss Green	UB6003 Olive Green
UB5024 Pastel Blue	UB5023 Distant Blue	UB5015 Sky Blue	UB5021 Water Blue	UB5019 Capri Blue	UB5002 Ultramarine Blue	UB5008 Grey Blue	UB5011 Steel Blue

DUBAI OFFICE
Office # 505, Block # 3,
Bin Shabib Mall,
Al Qusais, Dubai, U.A.E
Contact # +971 4 882 1839

SAUDI OFFICE
PO Box, 7184,
Al-Dammam-32415
Kingdom of Saudi Arabia
Contact # +966 13 809 2200

Contact Now:
+971 56 727 4205
+971 52 516 2797
sales@promaxdx.com
www.promaxdx.com

SOME OF OUR VALUED CLIENTS

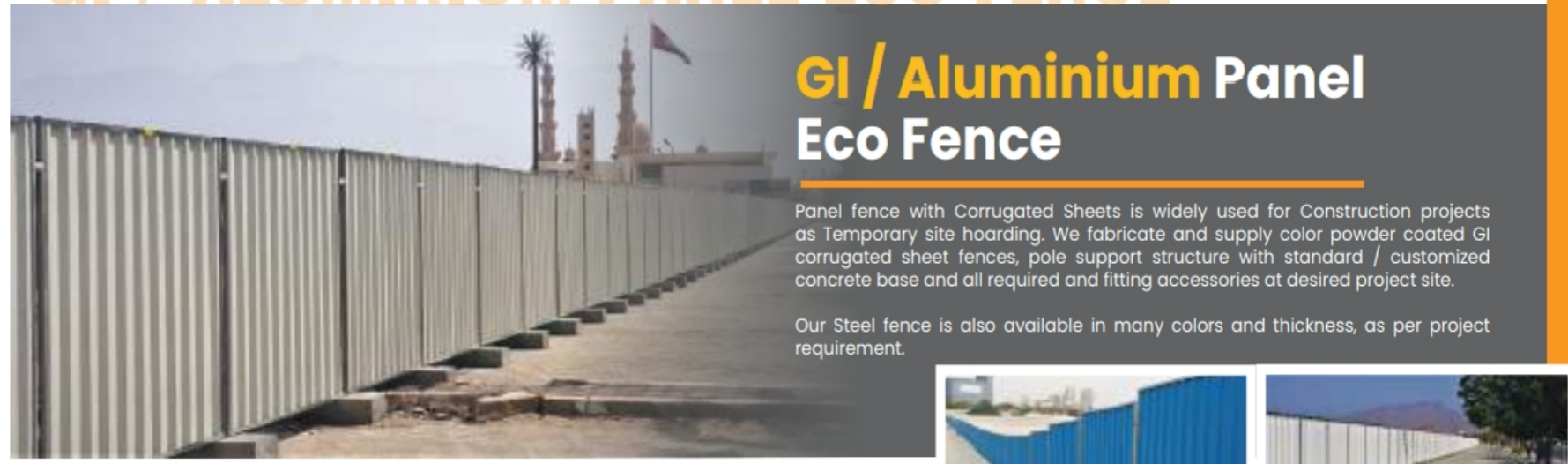


FENCE REPAIR / RUST TREATMENT / REVAMPING OF FENCE / HOARDING FOR SITES



FROM RUST TREATMENT TO REPLACEMENT AS WELL AS PAINT WORK FOR ANY KIND OF FENCING AS WELL AS HOARDING WITH FOUNDATION WORKS COMPLETE IN ALL RESPECT

GI / ALUMINIUM PANEL ECO FENCE



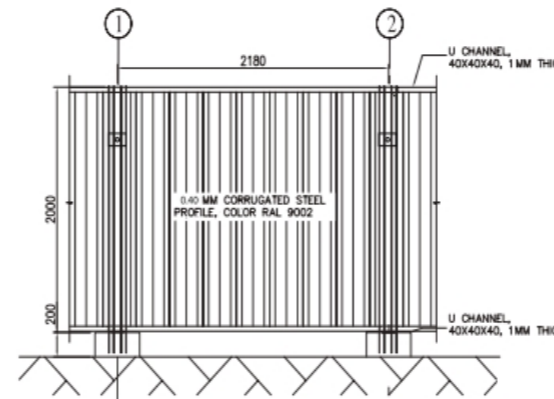
GI / Aluminium Panel Eco Fence

Panel fence with Corrugated Sheets is widely used for Construction projects as Temporary site hoarding. We fabricate and supply color powder coated GI corrugated sheet fences, pole support structure with standard / customized concrete base and all required and fitting accessories at desired project site.

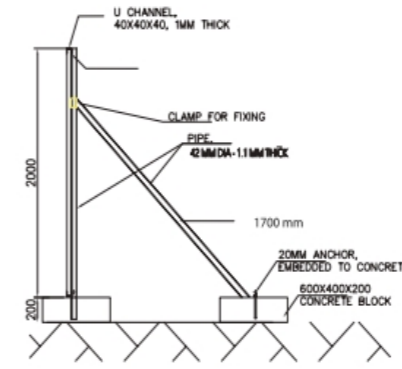
Our Steel fence is also available in many colors and thickness, as per project requirement.



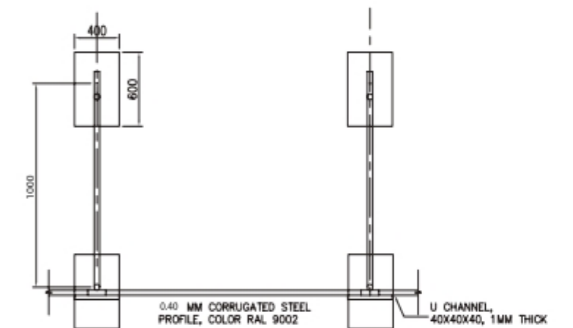
* Change in Size / Color available on Client request



Elevation



Section



Plan

DUBAI OFFICE
Office # 505, Block # 3,
Bin Shabib Mall,
Al Qusais, Dubai, U.A.E
Contact # +971 4 882 1839

SAUDI OFFICE
PO Box, 7184,
Al-Dammam-32415
Kingdom of Saudi Arabia
Contact # +966 13 809 2200

Contact Now:
+971 56 727 4205
+971 52 516 2797
sales@promaxdx.com
www.promaxdx.com

SOME OF OUR VALUED CLIENTS



FENCE REPAIR / RUST TREATMENT / REVAMPING OF FENCE / HOARDING FOR SITES

WELDED MESH FENCE

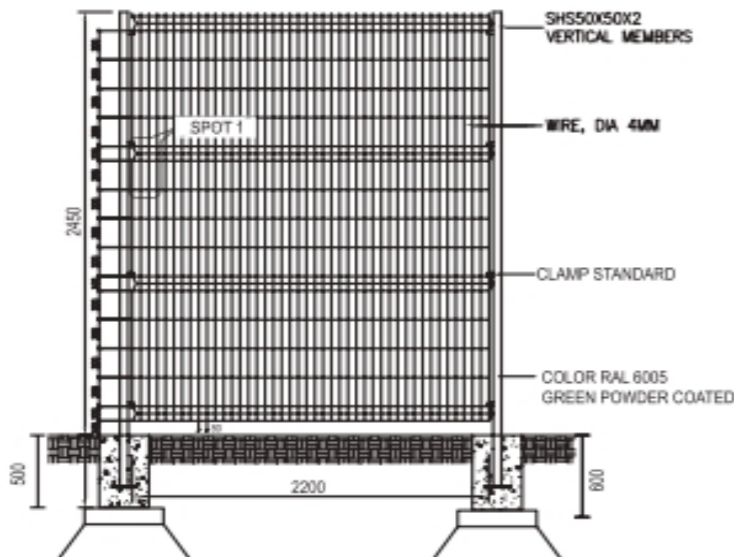


Welded Mesh Fence

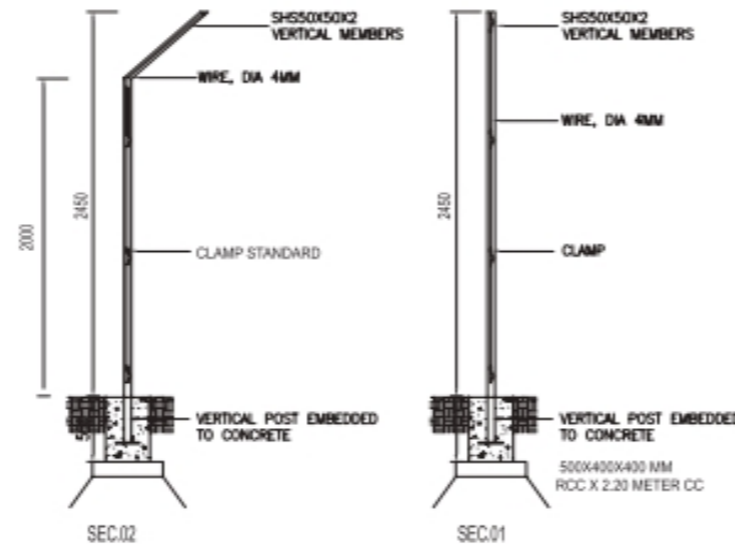
Welded mesh is an electric fusion welded prefabricated joined grid consisting of a series of parallel longitudinal wires with accurate spacing welded to cross wires at the required spacing.

We are among top names in the industry for supplying Welded Wire Mesh, which is widely used in Commercial and residential projects. It is widely used as Garden and Play Grounds and segmentation of large areas. Our product range is wide and comprehensive for meeting with diverse requirements of the clients and we can do supply and installation of all types of welded mesh fence with RCC blocks.

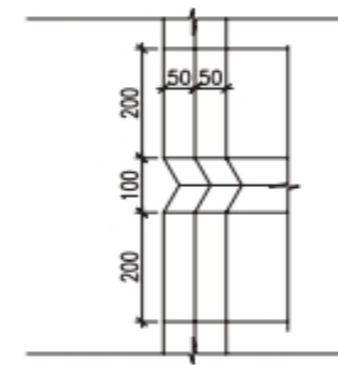
* Change in Size / Color available on Client request



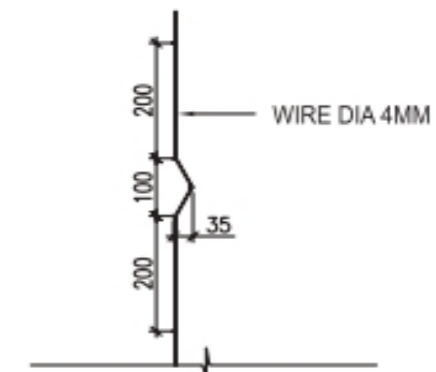
Elevation



Section



Details



DUBAI OFFICE
Office # 505, Block # 3,
Bin Shabib Mall,
Al Qusais, Dubai, U.A.E
Contact # +971 4 882 1839

SAUDI OFFICE
PO Box, 7184,
Al-Dammam-32415
Kingdom of Saudi Arabia
Contact # +966 13 809 2200

Contact Now:
+971 56 727 4205
+971 52 516 2797
sales@promaxdx.com
www.promaxdx.com

SOME OF OUR VALUED CLIENTS



FENCE REPAIR / RUST TREATMENT / REVAMPING OF FENCE / HOARDING FOR SITES

RTA / DECO FENCE



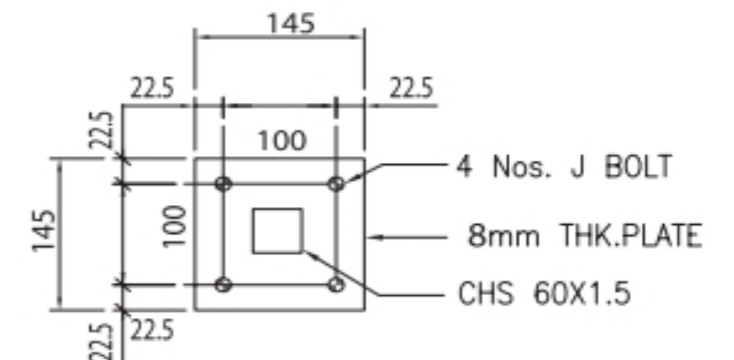
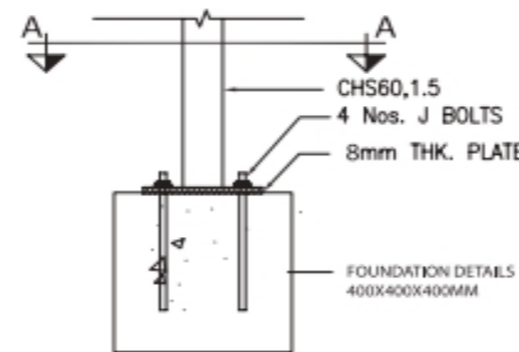
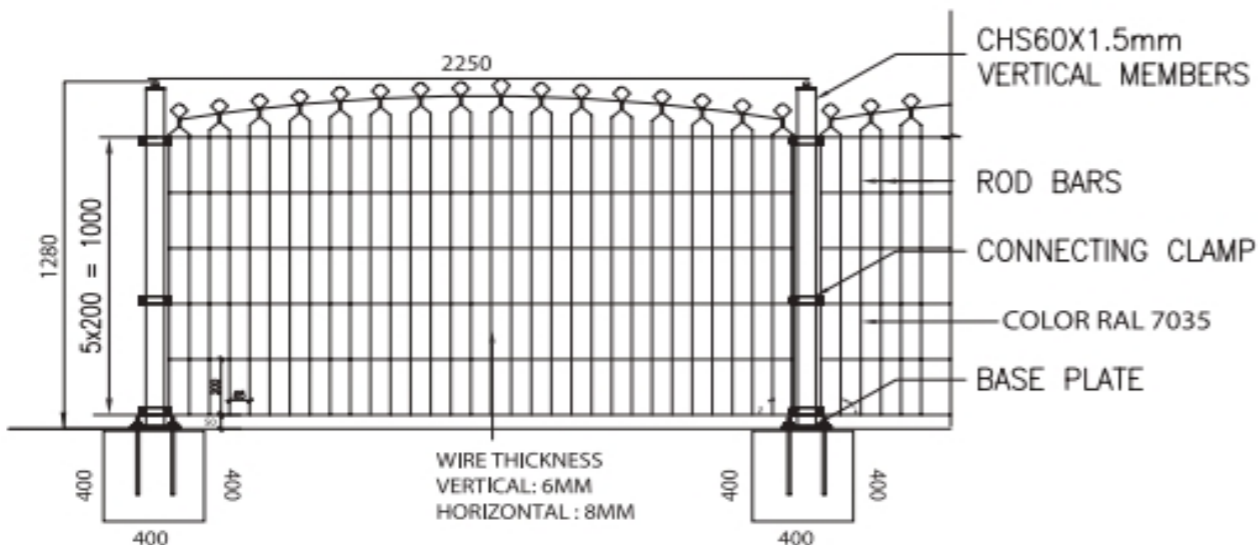
RTA / Deco Fence

Deco / RTA fence is a complete decorative welded fencing developed for design-oriented and rigid fencing solutions especially for long roads. It comes with a strong double wire horizontal wire system, tubular vertical posts with round cap and a beautiful ornamental curve design on top. It is all time favorite choice for Commercial Road projects as well as residential villa gardens in Middle East.

We are one of the largest suppliers for RTA Deco fence in Middle East.



* Change in Size / Color available on Client request



DUBAI OFFICE
Office # 505, Block # 3,
Bin Shabib Mall,
Al Qusais, Dubai, U.A.E
Contact # +971 4 882 1839

SAUDI OFFICE
PO Box, 7184,
Al-Dammam-32415
Kingdom of Saudi Arabia
Contact # +966 13 809 2200

Contact Now:
+971 56 727 4205
+971 52 516 2797
sales@promaxdx.com
www.promaxdx.com

SOME OF OUR VALUED CLIENTS



FENCE REPAIR / RUST TREATMENT / REVAMPING OF FENCE / HOARDING FOR SITES

CHAIN LINK MESH FENCE



Chain Link Fence with double Crank

* Change in Size / Color available on Client request

Chain Link Mesh Fence

A chain link fence (wire netting, wire mesh fence or diamond mesh fence) is a type of woven fence usually made from galvanized or PVC coated steel wire. It is the most popular fence in Middle east for a boundary fence to secure and protect any premise especially in farms and deserts.

In a similar way, roads are mostly secured on both sides with a strained wire fence, called Camel fence because especially in Middle East, in the desert area, camels can stray in to the road and as vehicles are moving in high speed can hit them and make major accidents. We are popular supplier for Chain Link & Camel fence. A number of high valued projects have been done in a proficient way in UAE with said fence.



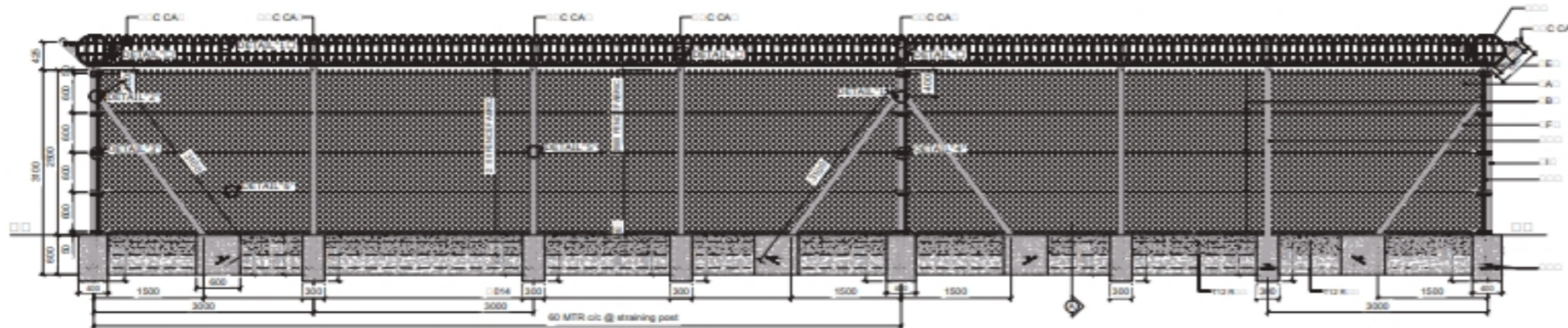
Chain Link Fence with Single Crank



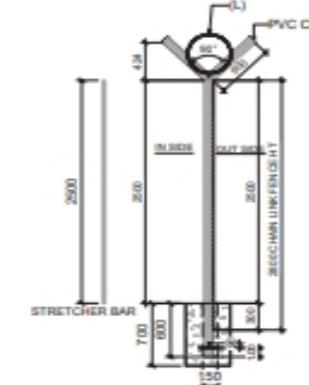
Chain Link Fence with ShadeNet & Crank



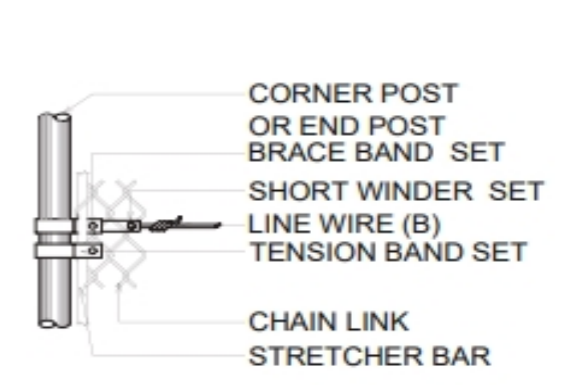
Chain Link Fence for Sports Court



Elevation



Section



Details

DUBAI OFFICE
Office # 505, Block # 3,
Bin Shabib Mall,
Al Qusais, Dubai, U.A.E
Contact # +971 4 882 1839

SAUDI OFFICE
PO Box, 7184,
Al-Dammam-32415
Kingdom of Saudi Arabia
Contact # +966 13 809 2200

Contact Now:
+971 56 727 4205
+971 52 516 2797
sales@promaxdx.com
www.promaxdx.com

SOME OF OUR VALUED CLIENTS



FENCE REPAIR / RUST TREATMENT / REVAMPING OF FENCE / HOARDING FOR SITES

ANTI CLIMB FENCE



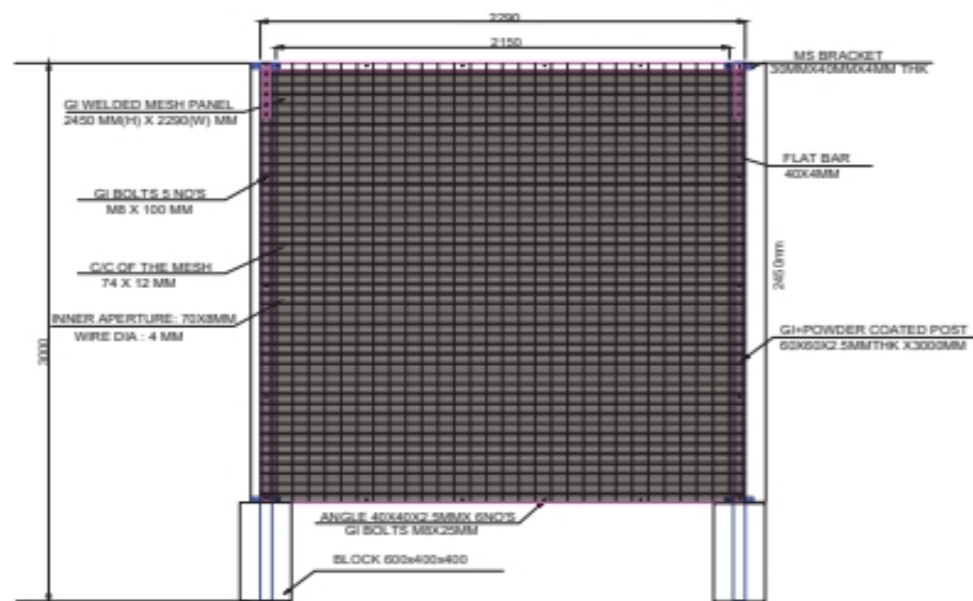
Anti-Climb Fence

The Anti-Climb fence is a unique perimeter security welded mesh that maintains a guarded display of visual screening balancing the need to secure the boundary. The distinguishing feature of Anti-Climb is the anti-climb and anti-cut welded wire mesh. This makes it very difficult to get a foothold on this fence and the cutting implements required to sever its welded heavy steel wire cannot fit into the minimal spaces of the mesh.

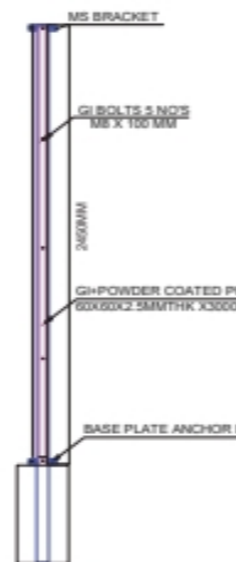
Anti-climb is coming in high quality Steel finished in Hot-Dip Galvanized & Powder Coating.



* Change in Size / Color available on Client request



Elevation



Section

DUBAI OFFICE
Office # 505, Block # 3,
Bin Shabib Mall,
Al Qusais, Dubai, U.A.E
Contact # +971 4 882 1839

SAUDI OFFICE
PO Box, 7184,
Al-Dammam-32415
Kingdom of Saudi Arabia
Contact # +966 13 809 2200

Contact Now:
+971 56 727 4205
+971 52 516 2797
sales@promaxdx.com
www.promaxdx.com

SOME OF OUR VALUED CLIENTS



FENCE REPAIR / RUST TREATMENT / REVAMPING OF FENCE / HOARDING FOR SITES

ALUMINIUM FENCE

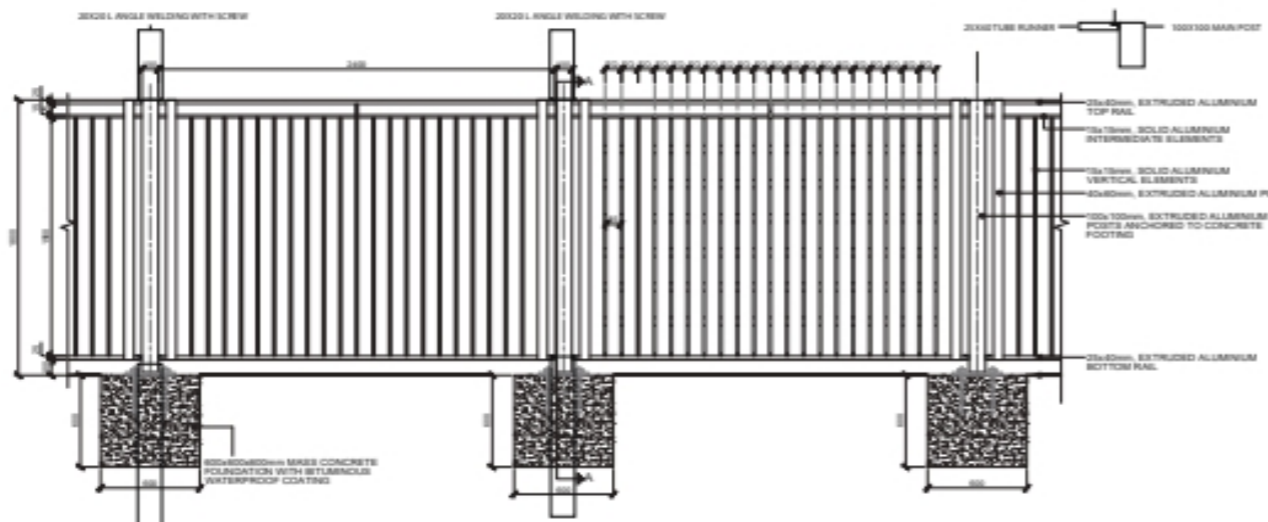


Aluminium Fence

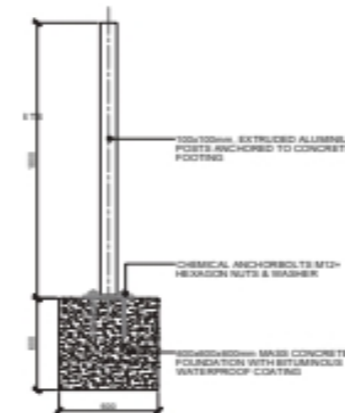
Aluminum fences are versatile, durable and cost-effective comparative to its wider benefits. They are a preferable choice for modular wall fencing as they can be built into different height specifications and topped with spikes to ensure proper security while still meeting the local code. Aluminum is not open to corrosion and it won't fade from sunlight, hence the fencing can withstand it all and offer you proper protection and privacy irrespective of the weather conditions.

We can offer you numerous fence style options to fit your requirement. Custom fencing to match with your surroundings and budget.

* Change in Size / Color available on Client request



Elevation



Section

DUBAI OFFICE
Office # 505, Block # 3,
Bin Shabib Mall,
Al Qusais, Dubai, U.A.E
Contact # +971 4 882 1839

SAUDI OFFICE
PO Box, 7184,
Al-Dammam-32415
Kingdom of Saudi Arabia
Contact # +966 13 809 2200

Contact Now:
+971 56 727 4205
+971 52 516 2797
sales@promaxdx.com
www.promaxdx.com

SOME OF OUR VALUED CLIENTS



FENCE REPAIR / RUST TREATMENT / REVAMPING OF FENCE / HOARDING FOR SITES

DOUBLE LEAF SLIDING GATE



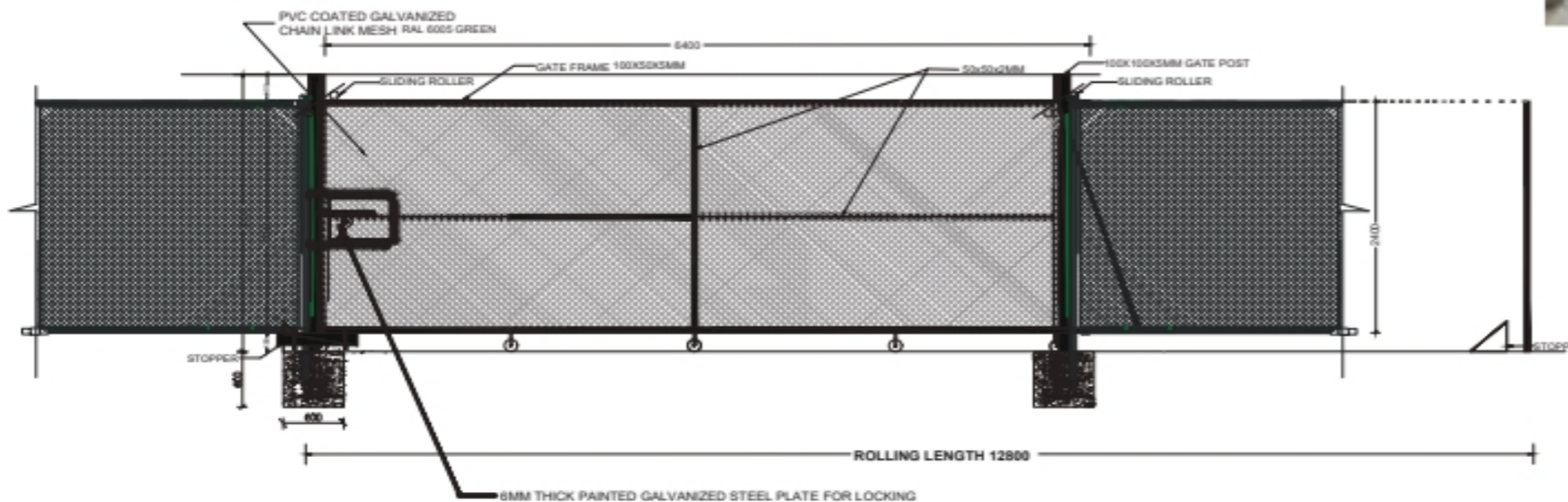
Double Leaf Sliding Gate

We supply any kind of metal gates in standard or customized sizes, matching to your fence, project or site conditions. A variety of swing or sliding gates are available and our sliding gate hardware is designed specifically for vehicular traffic or pedestrian or garden gates.

A traditional sliding gate is a wheel-mounted gate that slides along a track. Generally, the gate is a single unit and it stows to one side of the driveway opening, along the fence line. Also, we can fabricate & supply electrically controlled automatic sliding gates.



* Change in Size / Color available on Client request



Elevation

Section

DUBAI OFFICE
Office # 505, Block # 3,
Bin Shabib Mall,
Al Qusais, Dubai, U.A.E
Contact # +971 4 882 1839

SAUDI OFFICE
PO Box, 7184,
Al-Dammam-32415
Kingdom of Saudi Arabia
Contact # +966 13 809 2200

Contact Now:
+971 56 727 4205
+971 52 516 2797
sales@promaxdx.com
www.promaxdx.com

SOME OF OUR VALUED CLIENTS



FENCE REPAIR / RUST TREATMENT / REVAMPING OF FENCE / HOARDING FOR SITES

CAR PARK SHED / SUN SHADE

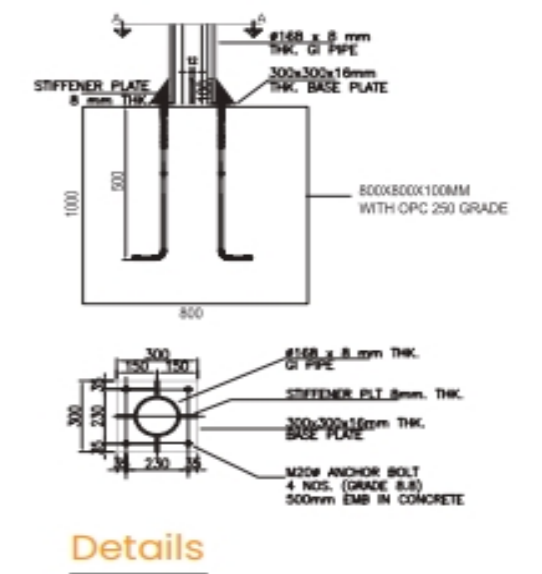
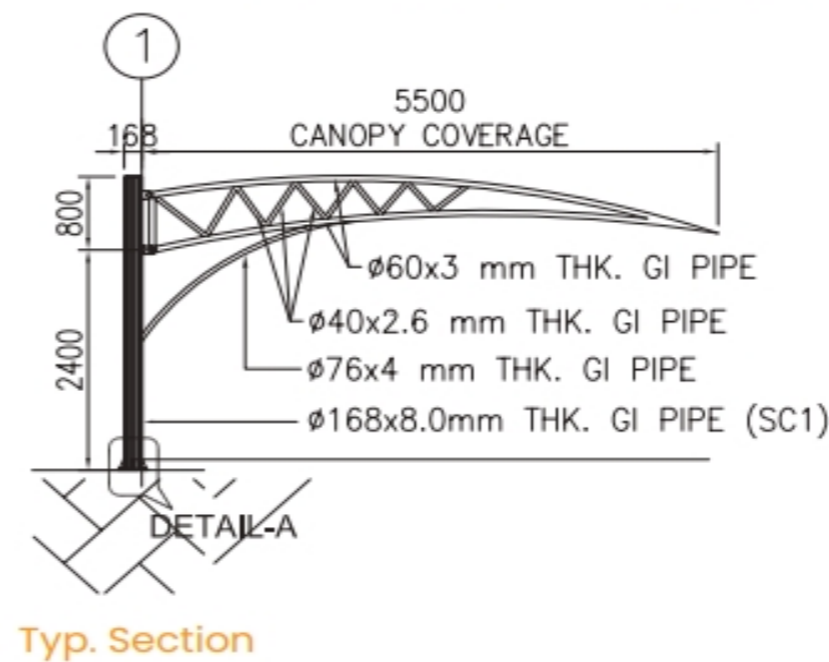
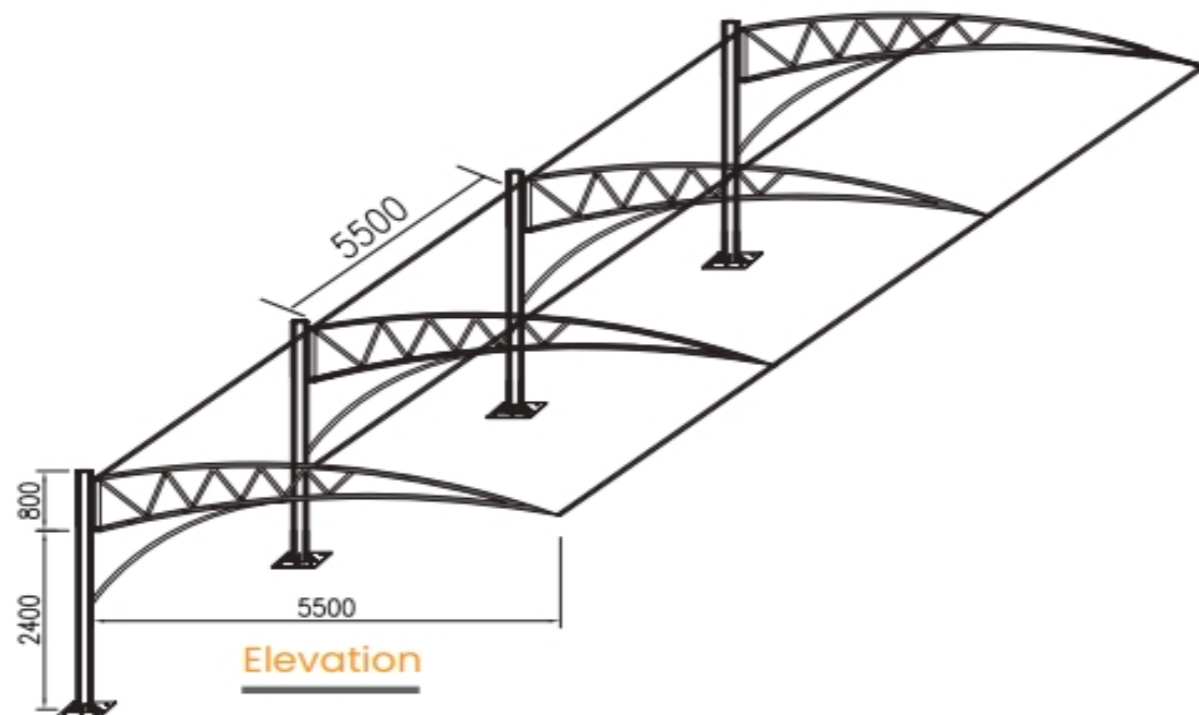


Car Park Shed / Sun Shade

A car parking shed is a covered structure used to offer limited protection to vehicles, primarily cars, from the elements. The structure can either be free standing or attached to a wall. Unlike most structures car park shed does not have four walls. Car Parking Shed offer less protection than garages but allow for more ventilation. We have our own special fabrication team to make any kind of parking shed with any design. Its fully PVC or knitted fabric shade with BS standard steel structure coming with 10 year warranty for fabric.



* Change in Size / Color available on Client request



DUBAI OFFICE
Office # 505, Block # 3,
Bin Shabib Mall,
Al Qusais, Dubai, U.A.E
Contact # +971 4 882 1839

SAUDI OFFICE
PO Box, 7184,
Al-Dammam-32415
Kingdom of Saudi Arabia
Contact # +966 13 809 2200

Contact Now:
+971 56 727 4205
+971 52 516 2797
sales@promaxdx.com
www.promaxdx.com

SOME OF OUR VALUED CLIENTS



مجموعة السركال
AL SERKAL GROUP



AeroGulf
Services



رد تاغ
REDTAG
Always Fashionable. Always Affordable.



AHDAAF
اهداف

بِسْمِ اللَّهِ الرَّحْمَنِ الرَّحِيمِ



AUTOMECH

GORICA

NAFFCO
PASSION TO PROTECT



Integrated
Service
Solutions

Hiro
INDUSTRIES

PROMAX
CONTRACTING



Lulu
GROUP INTERNATIONAL



PHL
EXPRESS

China Mall
中国城

SAFETY LIFE LINE



Height Safety Systems Roof Safety Systems

- Permanent Lifelines
- Temporary Lifelines
- Anchor Points
- Personal Protective Equipment
- Works in Suspension
- Skylight Protection
- Roof Walkways



DUBAI OFFICE
Office # 505, Block # 3,
Bin Shabib Mall,
Al Qusais, Dubai, U.A.E
Contact # +971 4 882 1839

SAUDI OFFICE
PO Box, 7184,
Al-Dammam-32415
Kingdom of Saudi Arabia
Contact # +966 13 809 2200

Contact Now:
+971 56 727 4205
+971 52 516 2797
sales@promaxdx.com
www.promaxdx.com

SOME OF OUR VALUED CLIENTS



SAFETY LIFE LINE

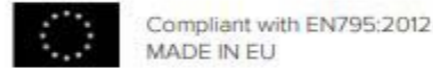
Fixing assembly for roof deck

Code N° LDV023



Description

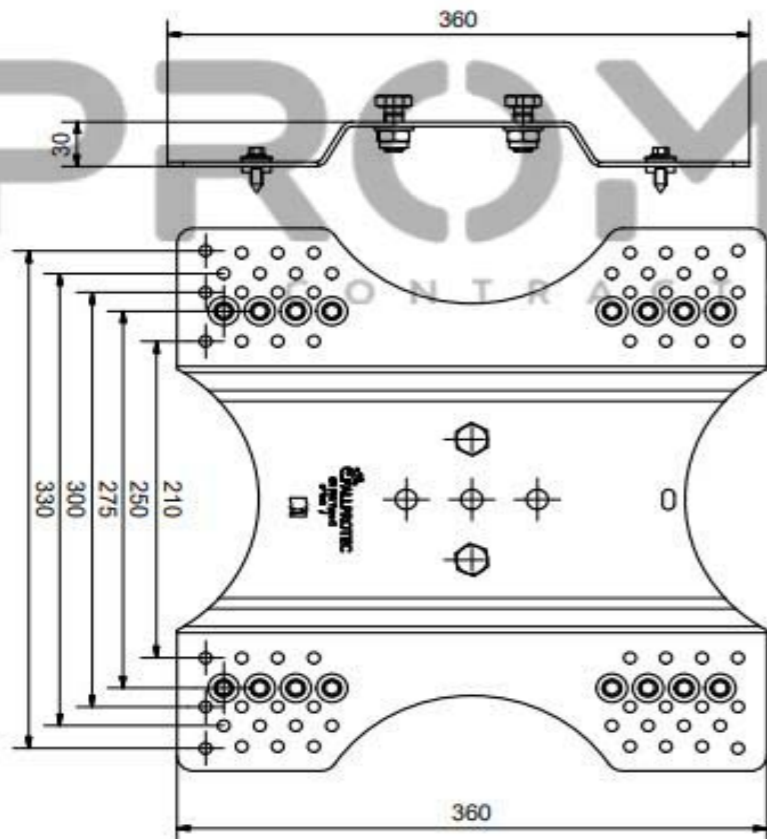
The fixing assembly LDV023 is used for end anchors and corners on corrugated metal sheet roofs. Thanks to its unique design, it distributes homogenously the pull out force on the roof. Supplied with special self-drilling screws and sealing tape.



Material

AISI 316
Powder coated RAL #9002

- KG** 2,7 Kg
- KN** roof 0,63mm = 11KN
roof 0,5mm = 8KN
- KN** roof 0,63mm = 22KN
roof 0,5mm = 16KN



End or top anchor

Code N° LDV002

January 2018



Description

The end anchor LDV002 is installed at the extremes of a Securope cable lifeline. This unique design resists the fall of 4 users simultaneously without any permanent deformation. The end anchor LDV002 is compatible with all Fallprotec fixing assemblies and can be fixed directly to concrete or a steel beam.



Advantages

- Undeformable
- Stainless steel AISI316 adapted to all types of environments
- Usable in ground, wall and ceiling configurations

Technical specifications

Delivered with an installer and user manual.
Material: Stainless steel AISI316



100mm

80mm

Code N°
LDV002

DUBAI OFFICE
Office # 505, Block # 3,
Bin Shabib Mall,
Al Qusais, Dubai, U.A.E
Contact # +971 4 882 1839

SAUDI OFFICE
PO Box, 7184,
Al-Dammam-32415
Kingdom of Saudi Arabia
Contact # +966 13 809 2200

Contact Now:
+971 56 727 4205
+971 52 516 2797
sales@promaxdx.com
www.promaxdx.com

SOME OF OUR VALUED CLIENTS



SAFETY LIFE LINE

RANGE OF INTERMEDIATE ANCHORS FOR SECUROPE HORIZONTAL/ INCLINED

Code N° LDV004 / 043 / 083



DESCRIPTION

The anchors are attached directly to the supporting structure or to one of the fixing assemblies described in the specific installation instructions for each type of roof (hot deck, cold deck, etc.), using an M12 or a chemical bolts.

The models LDV 004 and LDV043 consist in an articulated cable guide. The LDV 043 has a bolt of 12 mm and kept in position by a shear pin located between the flanges. If a force of 4 kN is applied to the cable guide, it bascules to the base of the anchor to reduce the torque applied to the supporting structure. This is the shock absorbing effect. Both models can be used in horizontal, vertical and inclined application without changing the type of anchor. Crimping can be done directly on the anchor LDV 043 itself, on the LDV 004 crimping by means of LDV 011 crimping ring, idem LDV 083.

The NEO anchor LDV 043 can be assembled with the new hexagonal washer LDV 034 to facilitate its fixation in a correct position, according the direction for the articulated cable guide.

The EVO anchor must be installed directly on LDV 079 post or on LDV 097 post for curve configurations (see next page and EVO Lifeline Technical sheet). The intermediate anchors can be installed on an intervals up to 12 m.

Securope is one of the only systems in the market where the components do not permanently deform after a fall.

TECHNICAL SPECIFICATION

Comes with an installer and user manual.
Material: LDV 004 Stainless steel SS316 / LDV 043 Stainless steel SS316 / LDV 083 Stainless steel SS316



Compliant with EN795 CLASS C
Test certificate n° AT6495704



Cable guide for Securope in 90° curve

Code N°LDV145



Description

A new cable guide for Securope in curves of 90° has been developed. It replaces the curve plates LDV071 and LDV096 with an more economical and faster installed system. The cable guide enables an easier mounting of the lifeline as well as a smoother passage of the glider in curved sections of the lifeline. This new cable guide will be available in spring 2020. Only for ground and ceiling configuration.



Technical specifications

Material: AISI 316

Advantages

- Easier mounting thanks to the integrated plate
- Ergonomic shape allowing an easy passage of the glider
- Resistant stainless steel AISI316

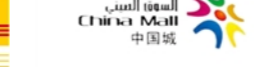


DUBAI OFFICE
Office # 505, Block # 3,
Bin Shabib Mall,
Al Qusais, Dubai, U.A.E
Contact # +971 4 882 1839

SAUDI OFFICE
PO Box, 7184,
Al-Dammam-32415
Kingdom of Saudi Arabia
Contact # +966 13 809 2200

Contact Now:
+971 56 727 4205
+971 52 516 2797
sales@promaxdx.com
www.promaxdx.com

SOME OF OUR VALUED CLIENTS



INTERLOCK SYSTEM



DUBAI OFFICE
Office # 505, Block # 3,
Bin Shabib Mall,
Al Qusais, Dubai, U.A.E
Contact # +971 4 882 1839

SAUDI OFFICE
PO Box, 7184,
Al-Dammam-32415
Kingdom of Saudi Arabia
Contact # +966 13 809 2200

Contact Now:
+971 56 727 4205
+971 52 516 2797
sales@promaxdx.com
www.promaxdx.com

SOME OF OUR VALUED CLIENTS



INTERLOCK SYSTEM



DUBAI OFFICE
Office # 505, Block # 3,
Bin Shabib Mall,
Al Qusais, Dubai, U.A.E
Contact # +971 4 882 1839

SAUDI OFFICE
PO Box, 7184,
Al-Dammam-32415
Kingdom of Saudi Arabia
Contact # +966 13 809 2200

Contact Now:
+971 56 727 4205
+971 52 516 2797
sales@promaxdx.com
www.promaxdx.com

SOME OF OUR VALUED CLIENTS



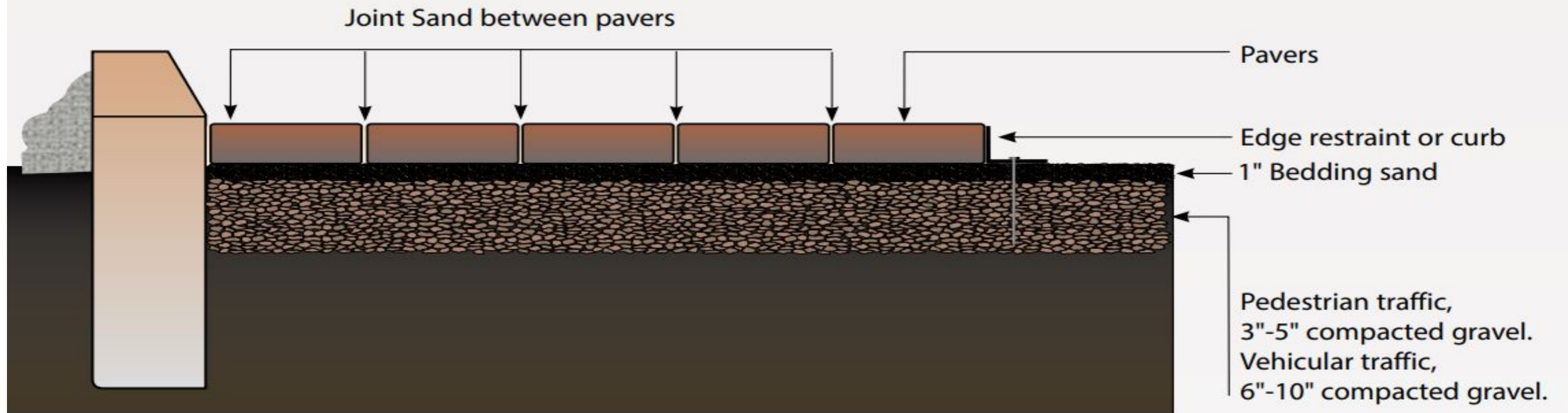
INTERLOCK SYSTEM

Guide to Paving Stone Installation

Preliminary Planning

Initial planning and preparation are key factors that will ensure a successful and lasting paving stone installation. Proper planning guarantees fine quality work and makes everyone's task easier.

Sketch a detailed diagram of the area to be paved, including all measurements required to calculate the amount of materials needed. The area being paved must contain some form of edge restraint.



DUBAI OFFICE
Office # 505, Block # 3,
Bin Shabib Mall,
Al Qusais, Dubai, U.A.E
Contact # +971 4 882 1839

SAUDI OFFICE
PO Box, 7184,
Al-Dammam-32415
Kingdom of Saudi Arabia
Contact # +966 13 809 2200

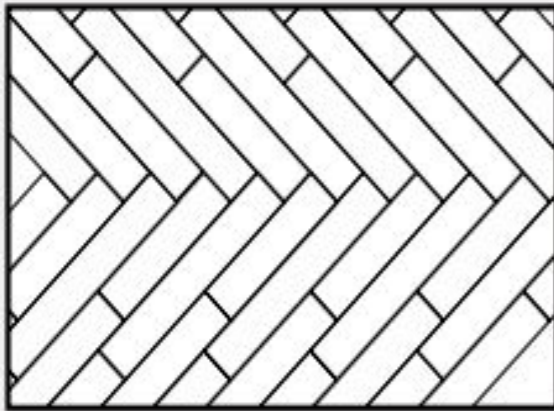
Contact Now:
+971 56 727 4205
+971 52 516 2797
sales@promaxdx.com
www.promaxdx.com

SOME OF OUR VALUED CLIENTS



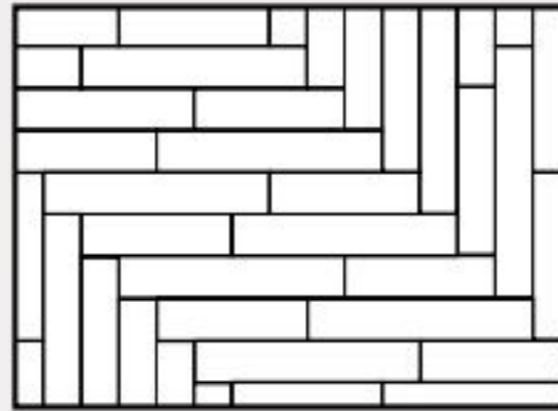
INTERLOCK SYSTEM

Piazza Series



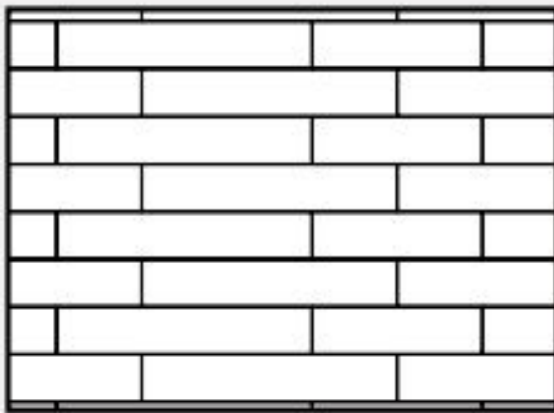
Type 1 & 2 - 45° Herringbone

Type 1 comprises 60% of total area
Type 2 comprises 40% of total area



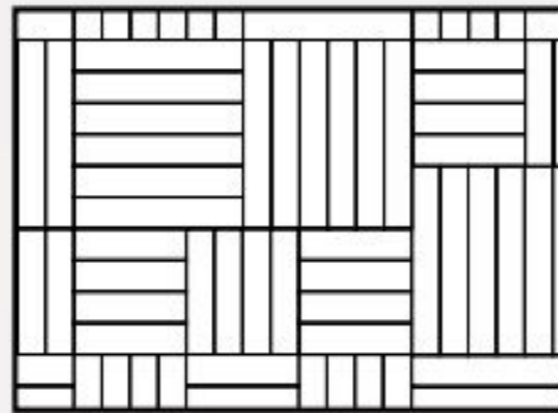
Type 1 & 2 - 90° Herringbone

Type 1 comprises 60% of total area
Type 2 comprises 40% of total area



Type 1 & 2 - Offset Runner

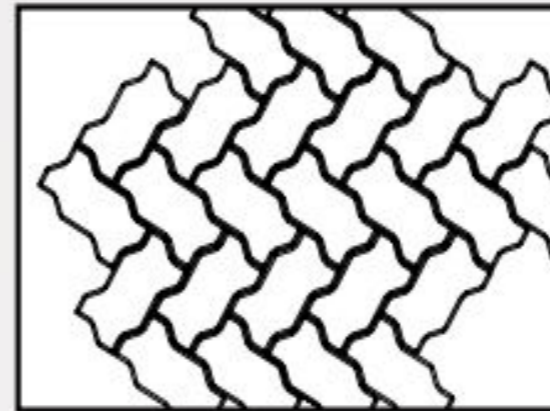
Type 1 comprises 60% of total area
Type 2 comprises 40% of total area



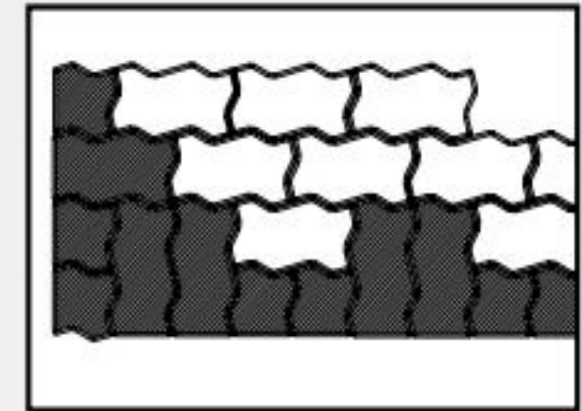
Type 1 & 2 - Pinwheel Pattern

Type 1 comprises 60% of total area
Type 2 comprises 40% of total area

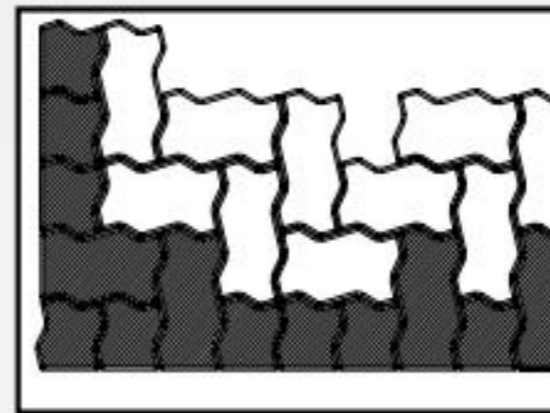
Universal



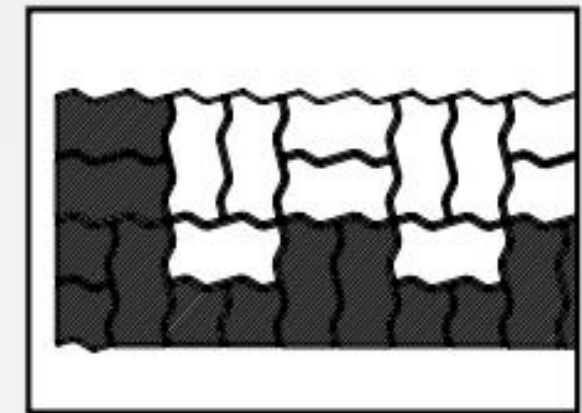
45° Herringbone



Runner Bond Edge Detail



**90° Herringbone
Edge Detail**



Parquet Edge Detail

DUBAI OFFICE
Office # 505, Block # 3,
Bin Shabib Mall,
Al Qusais, Dubai, U.A.E
Contact # +971 4 882 1839

SAUDI OFFICE
PO Box, 7184,
Al-Dammam-32415
Kingdom of Saudi Arabia
Contact # +966 13 809 2200

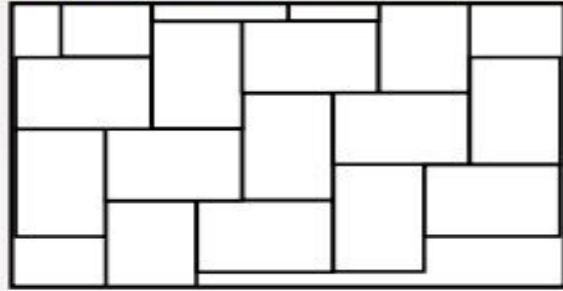
Contact Now:
+971 56 727 4205
+971 52 516 2797
sales@promaxdx.com
www.promaxdx.com

SOME OF OUR VALUED CLIENTS

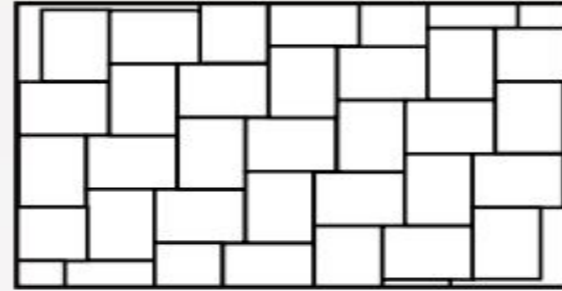


INTERLOCK SYSTEM

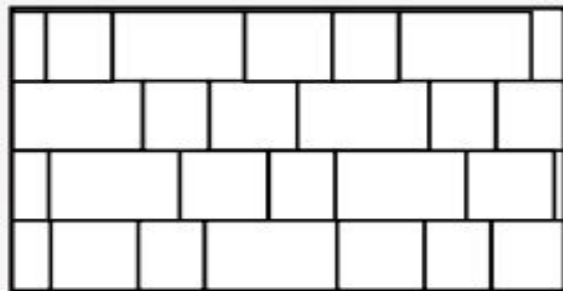
Villa Stone



Type 1 - 90° Basket Weave

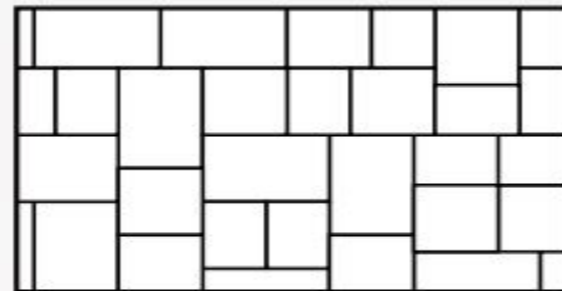


Type 3 - 90° Basket Weave



Type 1,2 & 3 - Runner Bond

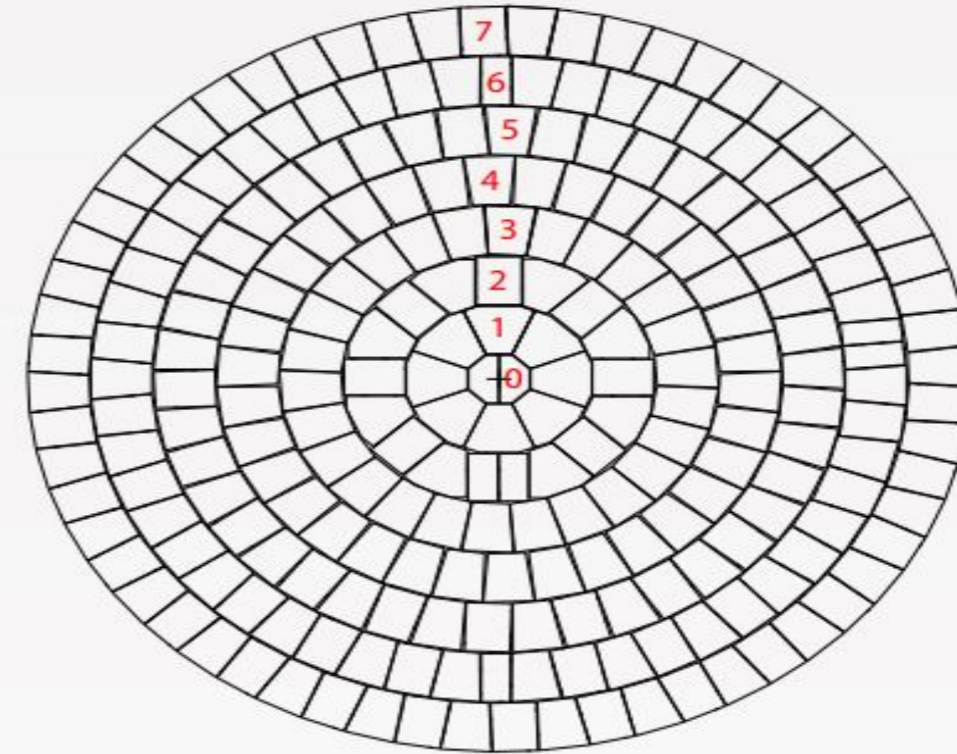
The Villa Stone Offset Runner Bond and Random Cobble patterns use an equal number of Type 1, Type 2 and Type 3 pieces.



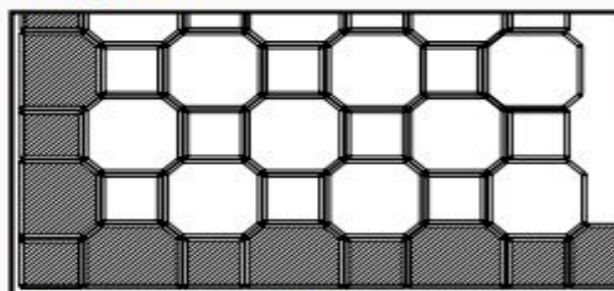
Type 1,2 & 3 - Random Cobble

Type 1 comprises 46% of total area.
Type 2 comprises 31% of total area.
Type 3 comprises 23% of total area.

Villa Stone Circle Kit



Legend



Legend Edge Detail

Circle Row	Circle Diam. cm	Circle Diam. Inch	Center Stone	Small Circle Stone	Large Circle Stone	Half Stone	Three Quarter Stone
7	242	95			30		30
6	210	82			26	4	23
5	178	70			21		21
4	145	57			34		
3	113	45			26		
2	81	32		8		2	7
1	49	19		8			
0	16	6	2				

DUBAI OFFICE
Office # 505, Block # 3,
Bin Shabib Mall,
Al Qusais, Dubai, U.A.E
Contact # +971 4 882 1839

SAUDI OFFICE
PO Box, 7184,
Al-Dammam-32415
Kingdom of Saudi Arabia
Contact # +966 13 809 2200

Contact Now:
+971 56 727 4205
+971 52 516 2797
sales@promaxdx.com
www.promaxdx.com

SOME OF OUR VALUED CLIENTS



FABRICATION, SUPPLY & INSTALLATION OF MS / GI SPIRAL LADDERS



Stair Spec.

Floor to floor height	As per the jobsite or drawing
Risers	150-200mm
Stair Width	Customized
Clear Tread With	Customized
Tread Type	38mm solid wood tread/12+1.52+12mm laminated glass tread/4mm checkered plate tread
Baluster Type	12mm tempered clear glass/8mm solid rod bar/25mm vertical post
Handrail	With Handrail
Stair Beam	76*4mm
Finish of Steel	Brushed/Polished Stainless Steel
	Powder Coated Steel
Additional	All main components can be customized



DUBAI OFFICE
Office # 505, Block # 3,
Bin Shabib Mall,
Al Qusais, Dubai, U.A.E
Contact # +971 4 882 1839

SAUDI OFFICE
PO Box, 7184,
Al-Dammam-32415
Kingdom of Saudi Arabia
Contact # +966 13 809 2200

Contact Now:
+971 56 727 4205
+971 52 516 2797
sales@promaxdx.com
www.promaxdx.com

SOME OF OUR VALUED CLIENTS



FABRICATION, SUPPLY & INSTALLATION OF MS / GI CAT LADDERS



DUBAI OFFICE

Office # 505, Block # 3,
Bin Shabib Mall,
Al Qusais, Dubai, U.A.E
Contact # +971 4 882 1839

SAUDI OFFICE

PO Box, 7184,
Al-Dammam-32415
Kingdom of Saudi Arabia
Contact # +966 13 809 2200

Contact Now:

+971 56 727 4205
+971 52 516 2797
sales@promaxdx.com
www.promaxdx.com

SOME OF OUR VALUED CLIENTS



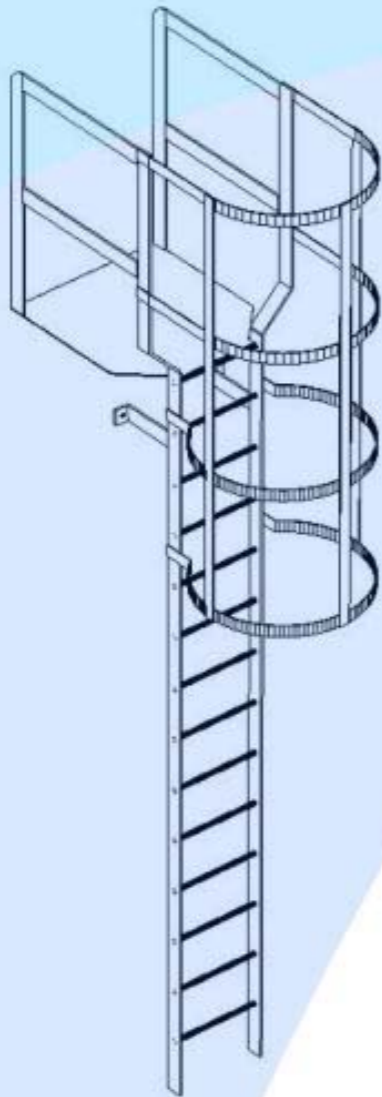
مجموعة السركال
AL SERKAL GROUP



AeroGulf
Services



FABRICATION, SUPPLY & INSTALLATION OF MS / GI CAT LADDERS



Cat Ladders

In conjunction with the customers requirements and their design, we manufacture cat ladders complete with landings and hoops for use where safe passage is required to roof-tops, access equipment, or raised areas.

بِسْمِ اللَّهِ الرَّحْمَنِ الرَّحِيمِ

PRODUCT FEATURES

- Manufactured to BS4211:2005 requirements
- Manufactured from S275 Mild Steel
- Hot Dipped Galvanised to BS EN ISO 1461
- All fixings are Zinc Plated to BS3382
- Fixings for attaching to building not supplied.
- Special coatings available – powder coating to BS EN 13438
- Manufactured in the UK to ISO 9001 Management System.

DUBAI OFFICE
Office # 505, Block # 3,
Bin Shabib Mall,
Al Qusais, Dubai, U.A.E
Contact # +971 4 882 1839

SAUDI OFFICE
PO Box, 7184,
Al-Dammam-32415
Kingdom of Saudi Arabia
Contact # +966 13 809 2200

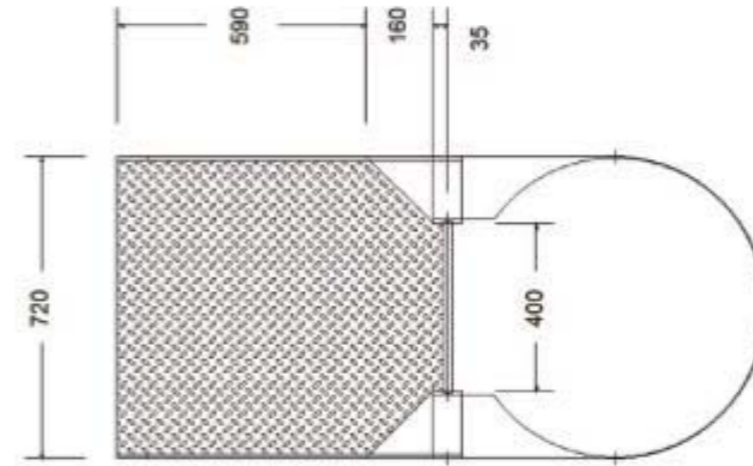
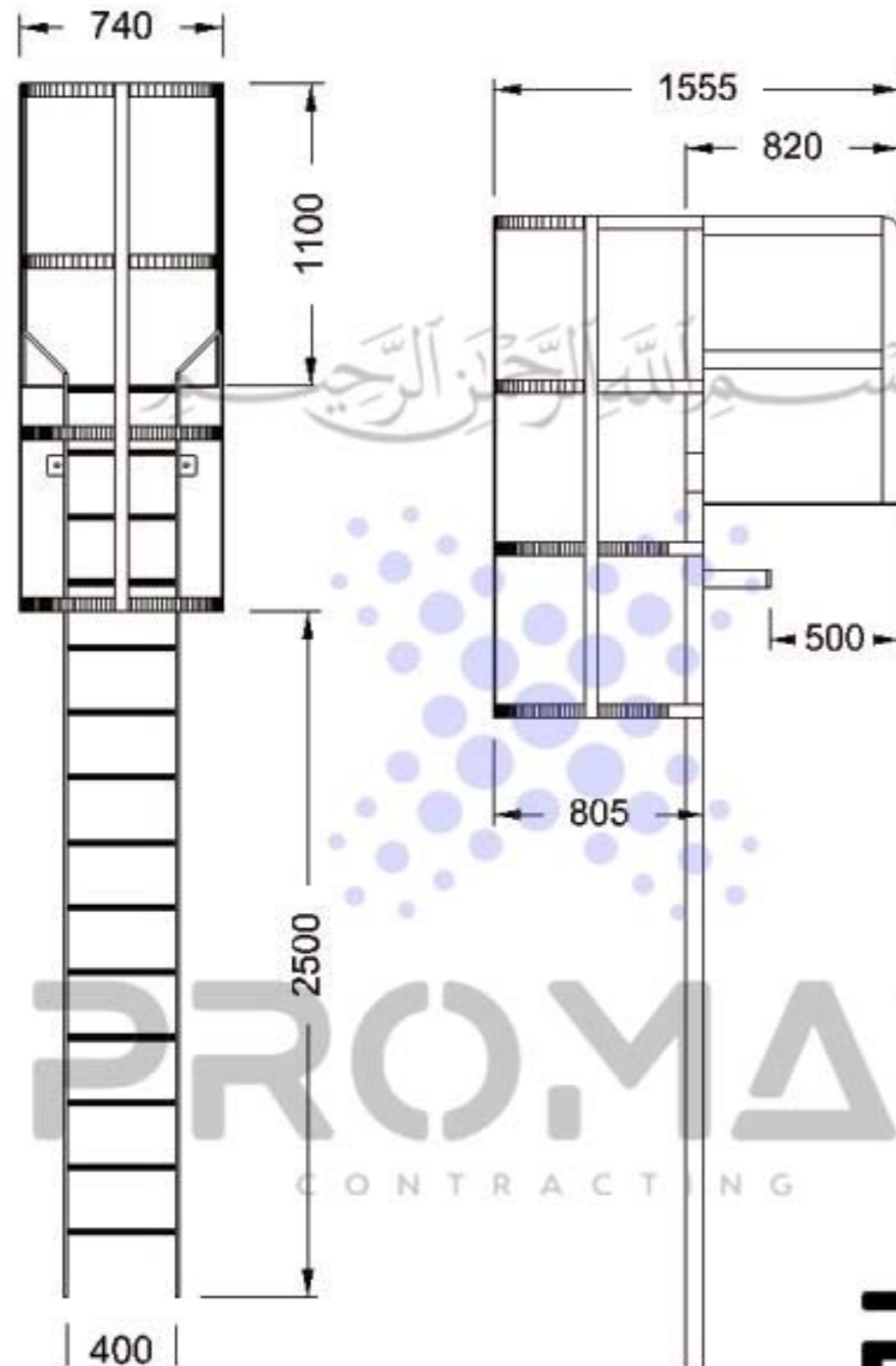
Contact Now:
+971 56 727 4205
+971 52 516 2797
sales@promaxdx.com
www.promaxdx.com

SOME OF OUR VALUED CLIENTS



FABRICATION, SUPPLY & INSTALLATION OF MS / GI CAT LADDERS

Typical Cat ladder Dimensions:



Contact our sales team for more information on any of our range of products.

بِسْمِ اللَّهِ الرَّحْمَنِ الرَّحِيمِ



Promax Contracting,
Office No. 505, Block # 3,
Bin Shabib Mall, Al Qusais,
Dubai, UAE

+971 56 727 4205
+971 52 516 2797
sales@promaxdx.com
www.promaxdx.com

DUBAI OFFICE
Office # 505, Block # 3,
Bin Shabib Mall,
Al Qusais, Dubai, U.A.E
Contact # +971 4 882 1839

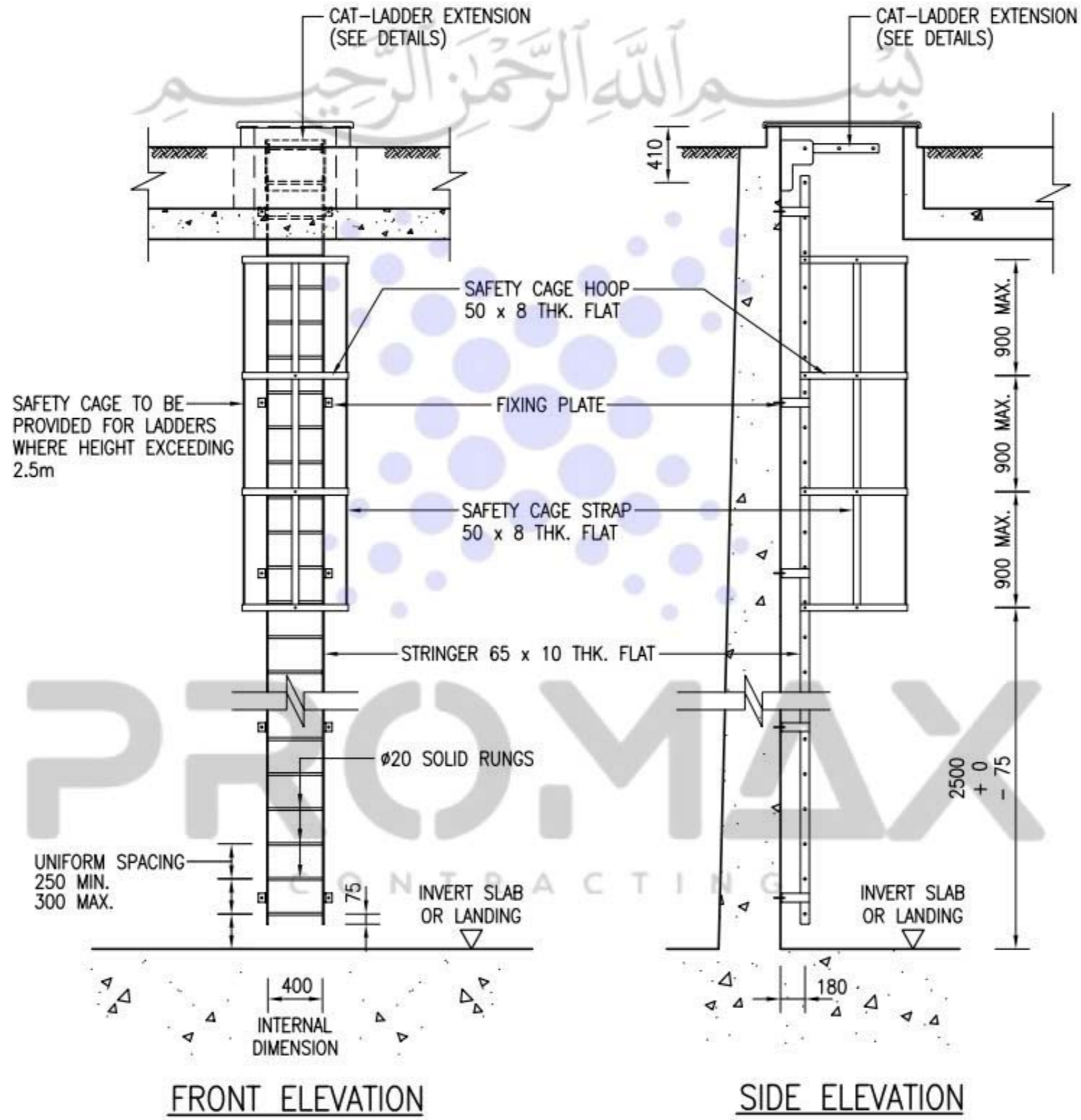
SAUDI OFFICE
PO Box, 7184,
Al-Dammam-32415
Kingdom of Saudi Arabia
Contact # +966 13 809 2200

Contact Now:
+971 56 727 4205
+971 52 516 2797
sales@promaxdx.com
www.promaxdx.com

SOME OF OUR VALUED CLIENTS



FABRICATION, SUPPLY & INSTALLATION OF MS / GI CAT LADDERS

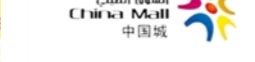


DUBAI OFFICE
Office # 505, Block # 3,
Bin Shabib Mall,
Al Qusais, Dubai, U.A.E
Contact # +971 4 882 1839

SAUDI OFFICE
PO Box, 7184,
Al-Dammam-32415
Kingdom of Saudi Arabia
Contact # +966 13 809 2200

Contact Now:
+971 56 727 4205
+971 52 516 2797
sales@promaxdx.com
www.promaxdx.com

SOME OF OUR VALUED CLIENTS



RUSTED PURLIN REPLACEMENT

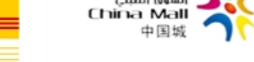


DUBAI OFFICE
Office # 505, Block # 3,
Bin Shabib Mall,
Al Qusais, Dubai, U.A.E
Contact # +971 4 882 1839

SAUDI OFFICE
PO Box, 7184,
Al-Dammam-32415
Kingdom of Saudi Arabia
Contact # +966 13 809 2200

Contact Now:
+971 56 727 4205
+971 52 516 2797
sales@promaxdx.com
www.promaxdx.com

SOME OF OUR VALUED CLIENTS



RUSTED PURLIN REPLACEMENT



DUBAI OFFICE
Office # 505, Block # 3,
Bin Shabib Mall,
Al Qusais, Dubai, U.A.E
Contact # +971 4 882 1839

SAUDI OFFICE
PO Box, 7184,
Al-Dammam-32415
Kingdom of Saudi Arabia
Contact # +966 13 809 2200

Contact Now:
+971 56 727 4205
+971 52 516 2797
sales@promaxdx.com
www.promaxdx.com

SOME OF OUR VALUED CLIENTS

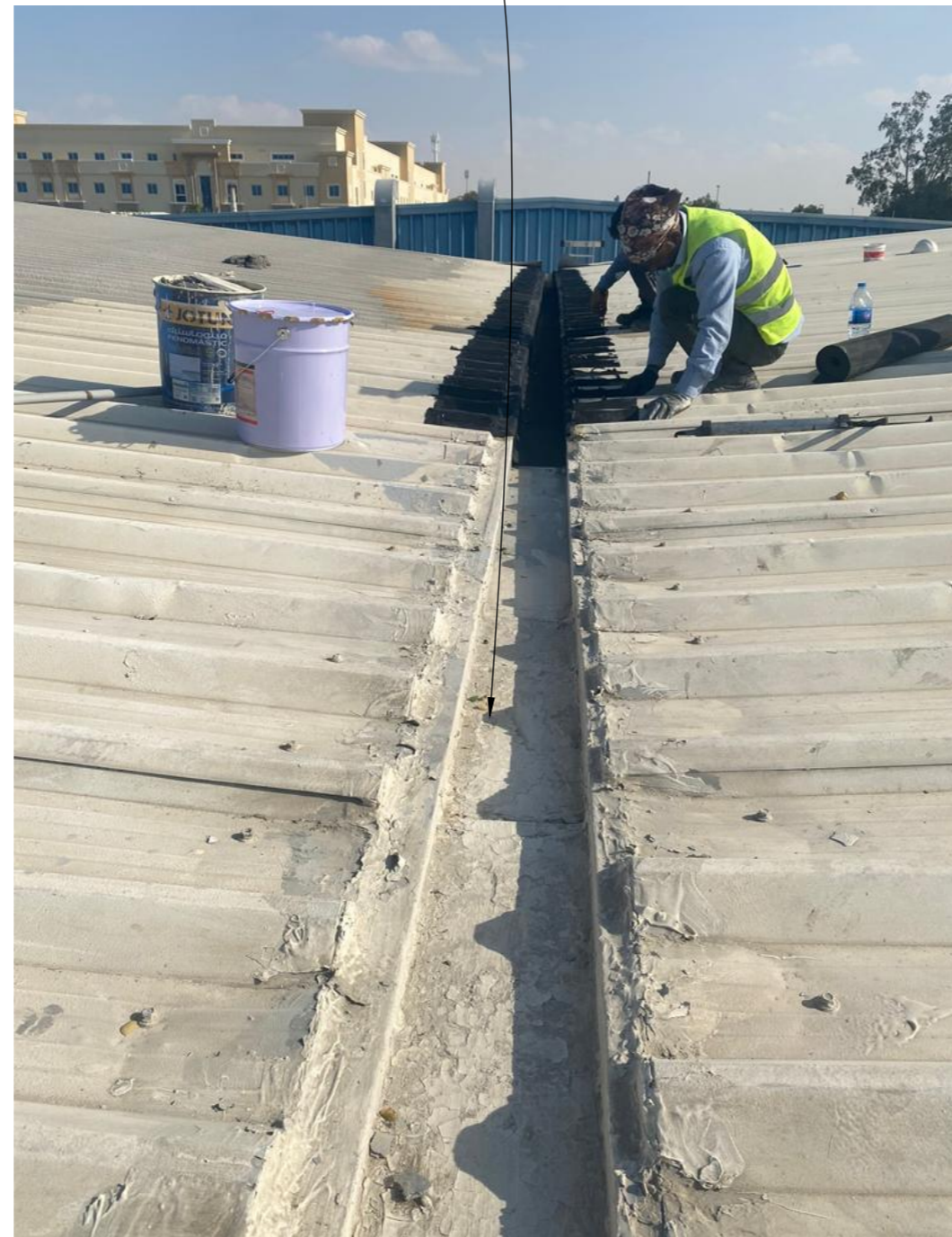


EAVE & VALLEY GUTTERS PROBLEM WITH PROMAX EPDM RUBBERIZED BACKFINGING PROTECTION SOLUTION

THERE IS A JOINT AFTER EACH 3-4 METER WHICH LEAKS AS WELL

GRP / SPRAY PAINT / PU COATINGS USUALLY APPLIED ON THE GUTTER BUT ALL REMAIN IN VAIN

THE GAP UNDER THE SHEET TERMINATION IS THE MAIN CAUSE FOR WATER LEAKAGE. AS WHEN THE DOWN SPOUTS ARE CLOGGED UP, THEN WATER LEVEL RISES AND THEN GO IN FROM THIS GAP IN BOTH EAVE AND VALLEY TYPE GUTTERS



DUBAI OFFICE
Office # 505, Block # 3,
Bin Shabib Mall,
Al Qusais, Dubai, U.A.E
Contact # +971 4 882 1839

SAUDI OFFICE
PO Box, 7184,
Al-Dammam-32415
Kingdom of Saudi Arabia
Contact # +966 13 809 2200

Contact Now:
+971 56 727 4205
+971 52 516 2797
sales@promaxdx.com
www.promaxdx.com

SOME OF OUR VALUED CLIENTS



EAVE & VALLEY GUTTERS PROBLEM WITH PROMAX EPDM RUBBERIZED BACKFINGING PROTECTION SOLUTION

EAVE GUTTER WILL BE COVERED FULLY IN EPDM AND CLOSING DOWN 1 SIDE SHEET
• TERMINATION USING PROMAX AND OUR BONDING ADHESIVE PREVENTING BACKFIRING OF THE WATER FROM THE GAPS UNDER THE SHEET

VALLEY GUTTER WILL BE COVERED FULLY IN EPDM AND CLOSING DOWN BOTH SIDES OF THE SHEET
• TERMINATION PREVENTING BACKFIRING OF THE WATER FROM THE GAPS UNDER THE SHEET

THE GAP BETWEEN THE CORE CUT AND PVC PIPE WILL ALSO BE
• TREATED WITH PROMAX BONDING ADHESIVE PREVENTING ANY LEAKAGE FROM THIS SECTION ACCORDINGLY



DUBAI OFFICE
Office # 505, Block # 3,
Bin Shabib Mall,
Al Qusais, Dubai, U.A.E
Contact # +971 4 882 1839

SAUDI OFFICE
PO Box, 7184,
Al-Dammam-32415
Kingdom of Saudi Arabia
Contact # +966 13 809 2200

Contact Now:
+971 56 727 4205
+971 52 516 2797
sales@promaxdx.com
www.promaxdx.com

SOME OF OUR VALUED CLIENTS



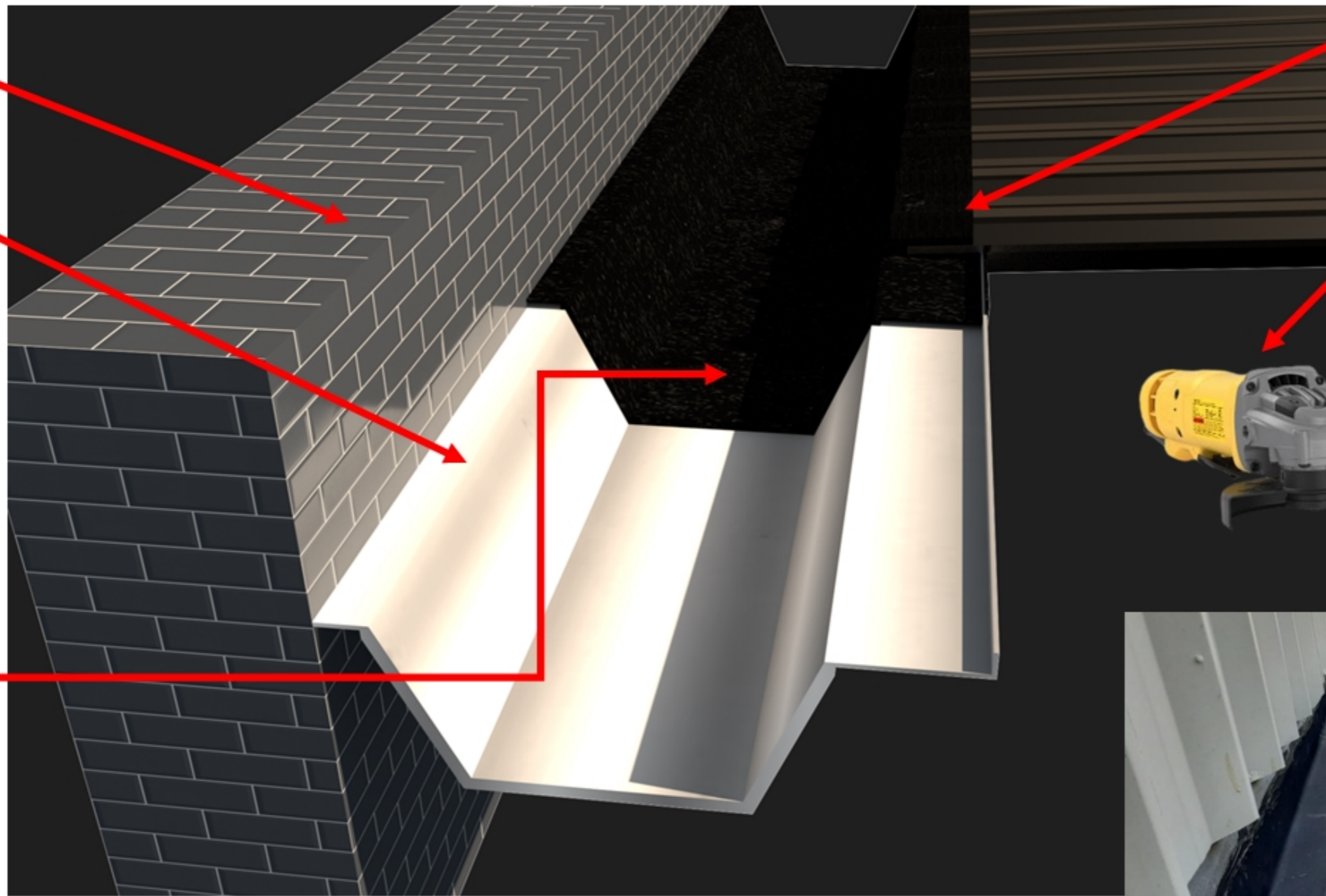
EAVE & VALLEY GUTTERS PROBLEM WITH PROMAX EPDM RUBBERIZED BACKFINGING PROTECTION SOLUTION

EAVE GUTTER DEMONSTRATION 3D MODEL

PARAPET WALL

ALUMINIUM / GI
GUTTER CHANNEL

EPDM 1.2MM
RUBBERIZED
MEMBRANE FULLY
COVERED

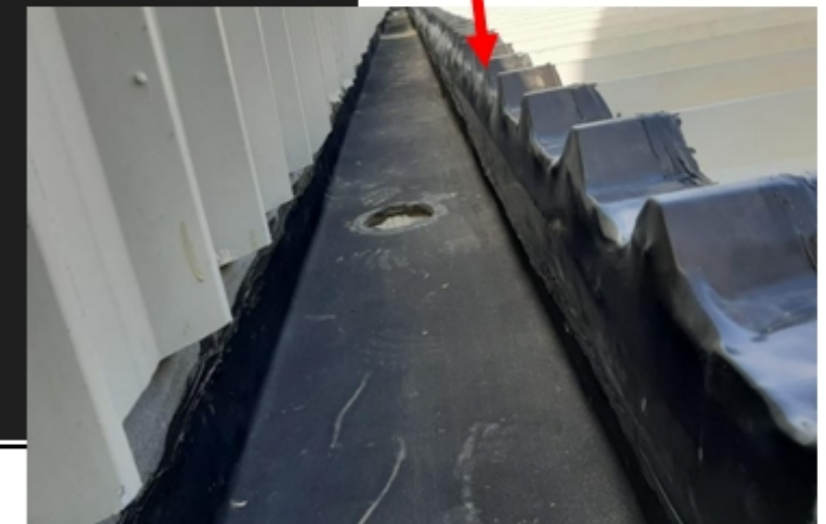


The roof sheet side will be sealed properly with EPDM Rubber preventing any kind of water from backfiring when the gutter is overfilled due to clogging of the drains / downspouts.

The Sheet edge will be cut off using the grinders so that the gutter wall is aligned with the sheet edges.



Afterwards, the gutter will look like this:



DUBAI OFFICE
Office # 505, Block # 3,
Bin Shabib Mall,
Al Qusais, Dubai, U.A.E
Contact # +971 4 882 1839

SAUDI OFFICE
PO Box, 7184,
Al-Dammam-32415
Kingdom of Saudi Arabia
Contact # +966 13 809 2200

Contact Now:
+971 56 727 4205
+971 52 516 2797
sales@promaxdx.com
www.promaxdx.com

SOME OF OUR VALUED CLIENTS



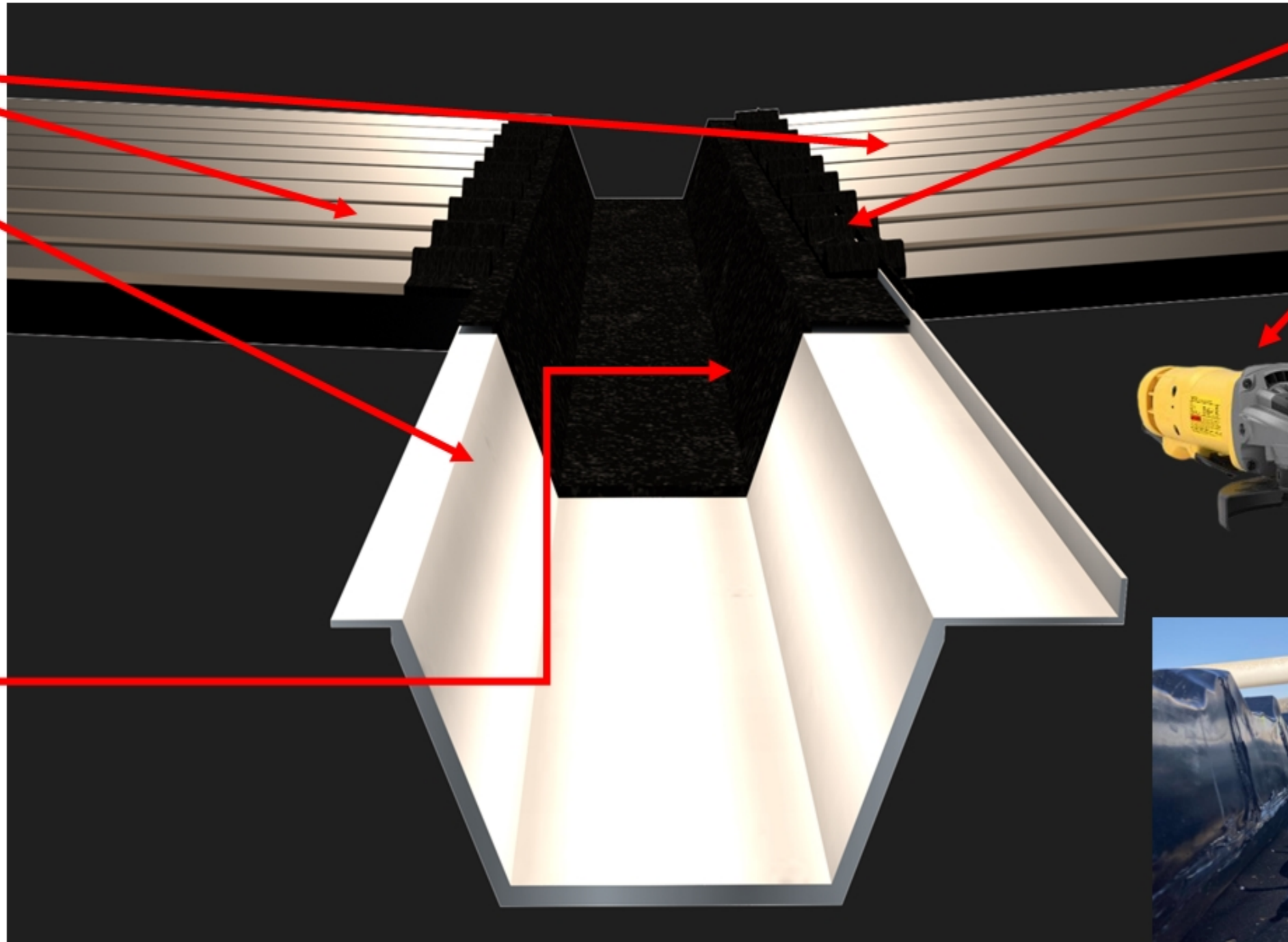
EAVE & VALLEY GUTTERS PROBLEM WITH PROMAX EPDM RUBBERIZED BACKFIRING PROTECTION SOLUTION

VALLEY GUTTER DEMONSTRATION 3D MODEL

BOTH SIDES ROOF SHEETS

ALUMINIUM / GI GUTTER CHANNEL

EPDM 1.2MM RUBBERIZED MEMBRANE FULLY COVERED



Both roof sheet sides will be sealed properly with EPDM Rubber preventing any kind of water from backfiring when the gutter is overfilled due to clogging of the drains / downspouts.

Both Sheet edges will be cut off using the grinders so that the gutter wall is aligned with the sheet edges.



Afterwards, the gutter will look like this:



DUBAI OFFICE

Office # 505, Block # 3,
Bin Shabib Mall,
Al Qusais, Dubai, U.A.E
Contact # +971 4 882 1839

SAUDI OFFICE

PO Box, 7184,
Al-Dammam-32415
Kingdom of Saudi Arabia
Contact # +966 13 809 2200

Contact Now:

+971 56 727 4205
+971 52 516 2797
sales@promaxdx.com
www.promaxdx.com

SOME OF OUR VALUED CLIENTS



LIGHTENING PROTECTION SYSTEM



DUBAI OFFICE
Office # 505, Block # 3,
Bin Shabib Mall,
Al Qusais, Dubai, U.A.E
Contact # +971 4 882 1839

SAUDI OFFICE
PO Box, 7184,
Al-Dammam-32415
Kingdom of Saudi Arabia
Contact # +966 13 809 2200

Contact Now:
+971 56 727 4205
+971 52 516 2797
sales@promaxdx.com
www.promaxdx.com

SOME OF OUR VALUED CLIENTS



LIGHTENING PROTECTION SYSTEM

ANNUAL PLAN

- 24/7 Availability
- 4 Visits /Plan
- Test Reports

* Rates are subject to change as per site requirements.

SEMI ANNUAL PLAN

- 24/7 Availability
- 2 Visits /Plan
- Test Reports

* Rates are subject to change as per site requirements.

On Call PLAN

- 24/7 Availability
- 1 Visits /Plan
- Test Reports

* Rates are subject to change as per site requirements.

We provide complete services of E&LPS from Tendering to Handover to the client. Our main services for installation are listed below but not limited to;

- ❑ Designing ,Shop Drawing ,As Built drawings, BOQ & Material Submittals preparation.
- ❑ Installation of Ground works including Boaring, sleeves installation, Earthing Rods installation as per the specifications & related standards.
- ❑ Installation of Earthing Ground & Roof Mesh, down conductors and Air terminals.
- ❑ Installation & Testing of Lightning Protection System as per the standards.

- ❑ We are providing complete testing & commissioning solution services as per the Standards and DEWA Norms.
- ❑ Visual inspection of installed LPS conductors and joints.
- ❑ Test the resistance of earthing system connected to LPS.
- ❑ Perform impedance test for down conductors.
- ❑ Check mechanical protection components are intact and in the right place.
- ❑ Check the LPS using its remote connectivity.

Reference Range as per the Standards are;

- ❑ For Earthing the resistance of Electrode < 1 Ohms.
- ❑ For LPS the resistance of Electrode < 10 Ohms.
- ❑ For Continuity Test the resistance down conductors < 0.2 Ohms.

